

Recombinant Full Length Human ASCL2 Protein, C-Flag-tagged

Cat. No. ASCL2-1467HFL **Lot. No.** (See product label)

SPECIFICATION

Product Overview	Recombinant Full Length Human ASCL2 Protein, fused to Flag-tag at C-terminus, was expressed in Mammalian cells.
Species	Human
Source	Mammalian Cells
Description	This gene is a member of the basic helix-loop-helix (BHLH) family of transcription factors. It activates transcription by binding to the E box (5'-CANNTG-3'). Dimerization with other BHLH proteins is required for efficient DNA binding. Involved in the determination of the neuronal precursors in the peripheral nervous system and the central nervous system.
Form	25 mM Tris HCl, pH 7.3, 100 mM glycine, 10% glycerol.
Molecular Mass	20 kDa
AA Sequence	MDGGTLPRSAPPAPPVPVGCARRRPAPELLRCSRRRRPATAETGGGAAAVARR NERERNRVKLVNLGF QALRQHVPHGASKKLSKVETLRSAYEYIRALQRLLAEHDA VRNALAGGLRPQAVRPSAPRGPPGTTTPVA ASPSRASSSPGRGGSSEPGSPRSAYSSDDSGCEGALSPAERELLDFFSSWLGGYSG PTRTRPLEQKLISEEDLAANDILDYKDDDDKV
Purity	> 80% as determined by SDS-PAGE and Coomassie blue staining.

 Tel: 1-631-559-9269 1-516-512-3133

 Email: info@creative-biomart.com  Fax: 1-631-938-8127

 45-1 Ramsey Road, Shirley, NY 11967, USA

Stability	Stable for 12 months from the date of receipt of the product under proper storage and handling conditions. Avoid repeated freeze-thaw cycles.
Storage	Store at -80 centigrade.
Concentration	>50 ug/mL as determined by microplate BCA method.
Preparation	Recombinant protein was captured through anti-DDK affinity column followed by conventional chromatography steps.
Protein Families	Druggable Genome, Transcription Factors
Full Length	Full L.

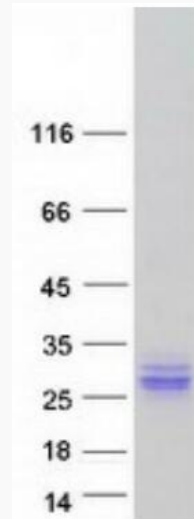
GENE INFORMATION

Gene Name	ASCL2 achaete-scute family bHLH transcription factor 2 [Homo sapiens (human)]
Official Symbol	ASCL2
Synonyms	ASH2; HASH2; MASH2; bHLHa45
Gene ID	430
mRNA Refseq	NM_005170.3
Protein Refseq	NP_005161.1
MIM	601886
UniProt ID	Q99929

 Tel: 1-631-559-9269 1-516-512-3133

 Email: info@creative-biomart.com  Fax: 1-631-938-8127

 45-1 Ramsey Road, Shirley, NY 11967, USA



Coomassie blue staining of purified ASCL2 protein.

 Tel: 1-631-559-9269 1-516-512-3133

 Email: info@creative-biomart.com  Fax: 1-631-938-8127

 45-1 Ramsey Road, Shirley, NY 11967, USA