

Recombinant Mouse ASCL2 Protein (1-263 aa), His-Myc-tagged

Cat. No. ASCL2-2532M Lot. No. (See product label)

SPECIFICATION

Product Overview	Recombinant Mouse ASCL2 Protein (1-263 aa) is produced by E. coli expression system. This protein is fused with a 10xHis tag at the N-terminal and a Myc tag at the C-terminal. Research Area: Developmental Biology. Protein Description: Full Length.
Species	Mouse
Source	E.coli
ProteinLength	1-263 aa
Description	AS-C proteins are involved in the determination of the neuronal precursors in the peripheral nervous system and the central nervous system.
Form	Tris-based buffer,50% glycerol
Molecular Mass	32.8 kDa
AA Sequence	MEAHLDWYGV PGLQEASDACPRES CSSALPEAREGANVHFPPHPVPREHFSCAAP ELVAGAQGLNASLMDGGALPRLMPTSSGVAGACAARRRQASPELLRCSR RRRRSGA TEASSSSAAVARRNERERNRVKLVNLGFQALRQHVP HGGANKKLSKVETLRS AVEY IRALQRLLAEHDAVRAALAGLLTPATPPSDECAQPSASPASASLSCASTSPSPDRL GCSEPTSPRSAYSSEESSCEGELSPMEQELLD FSSWLGGY
Purity	> 85% as determined by SDS-PAGE.

 Tel: 1-631-559-9269 1-516-512-3133

 Email: info@creative-biomart.com  Fax: 1-631-938-8127

 45-1 Ramsey Road, Shirley, NY 11967, USA

Notes	Repeated freezing and thawing is not recommended. Store working aliquots at 4 centigrade for up to one week.
Storage	The shelf life is related to many factors, storage state, buffer ingredients, storage temperature and the stability of the protein itself. Generally, the shelf life of liquid form is 6 months at -20 centigrade/-80 centigrade. The shelf life of lyophilized form is 12 months at -20 centigrade/-80 centigrade.
Concentration	A hardcopy of COA will be sent along with the products. Please refer to it for detailed information.

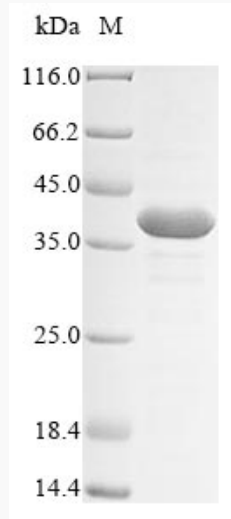
GENE INFORMATION

Gene Name	Ascl2 achaete-scute complex homolog 2 (Drosophila) [Mus musculus]
Official Symbol	ASCL2
Synonyms	ASCL2; achaete-scute homolog 2; ASH-2; mASH-2; mammalian achaete scute homolog 2; Mash2; bHLHa45; 2410083115Rik;
Gene ID	17173
mRNA Refseq	NM_008554
Protein Refseq	NP_032580
UniProt ID	O35885

 Tel: 1-631-559-9269 1-516-512-3133

 Email: info@creative-biomart.com  Fax: 1-631-938-8127

 45-1 Ramsey Road, Shirley, NY 11967, USA



(Tris-Glycine gel) Discontinuous SDS-PAGE (reduced) with 5% enrichment gel and 15% separation gel.

 Tel: 1-631-559-9269 1-516-512-3133

 Email: info@creative-biomart.com  Fax: 1-631-938-8127

 45-1 Ramsey Road, Shirley, NY 11967, USA