

## Recombinant Human SILV protein, MYC/DDK-tagged

Cat. No. ASCL2-906H Lot. No. (See product label)

### SPECIFICATION

<b>Product Overview</b>	Recombinant Human SILV fused with MYC/DDK tag at C-terminal was expressed in HEK293.
<b>Species</b>	Human
<b>Source</b>	HEK293
<b>Description</b>	This gene is a member of the basic helix-loop-helix (BHLH) family of transcription factors. It activates transcription by binding to the E box (5'-CANNTG-3'). Dimerization with other BHLH proteins is required for efficient DNA binding. Involved in the determination of the neuronal precursors in the peripheral nervous system and the central nervous system.
<b>Form</b>	25 mM Tris.HCl, pH 7.3, 100 mM glycine, 10% glycerol.
<b>Molecular Mass</b>	20 kDa
<b>Purity</b>	> 80% as determined by SDS-PAGE and Coomassie blue staining
<b>Notes</b>	Recombinant protein was captured through anti-DDK affinity column followed by conventional chromatography steps.
<b>Concentration</b>	>50 ug/mL as determined by microplate BCA method

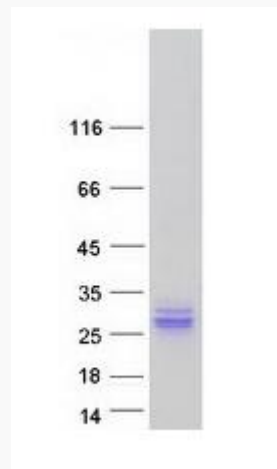
### GENE INFORMATION

 Tel: 1-631-559-9269 1-516-512-3133

 Email: [info@creative-biomart.com](mailto:info@creative-biomart.com)  Fax: 1-631-938-8127

 45-1 Ramsey Road, Shirley, NY 11967, USA

<b>Gene Name</b>	ASCL2 achaete-scute complex homolog 2 (Drosophila) [ Homo sapiens ]
<b>Official Symbol</b>	ASCL2
<b>Synonyms</b>	ASCL2; achaete-scute complex homolog 2 (Drosophila); achaete scute complex (Drosophila) homolog like 2 , achaete scute complex like 2 (Drosophila); achaete-scute homolog 2; ASH2; bHLHa45; HASH2; ASH-2; achaete-scute complex-like 2; mammalian achaete/scute homologue 2; class A basic helix-loop-helix protein 45; MASH2;
<b>Gene ID</b>	430
<b>mRNA Refseq</b>	NM_005170
<b>Protein Refseq</b>	NP_005161
<b>MIM</b>	601886
<b>UniProt ID</b>	Q99929



Tel: 1-631-559-9269 1-516-512-3133

Email: [info@creative-biomart.com](mailto:info@creative-biomart.com) Fax: 1-631-938-8127

45-1 Ramsey Road, Shirley, NY 11967, USA