

Recombinant Human ASF1A protein, GST-tagged

Cat. No. ASF1A-903H **Lot. No.** (See product label)

SPECIFICATION

Product Overview	Human ASF1A full-length ORF (NP_054753.1, 1 a.a. - 204 a.a.) recombinant protein with GST-tag at N-terminal.
Species	Human
Source	Wheat Germ
Description	This gene encodes a member of the H3/H4 family of histone chaperone proteins and is similar to the anti-silencing function-1 gene in yeast. The protein is a key component of a histone donor complex that functions in nucleosome assembly. It interacts with histones H3 and H4, and functions together with a chromatin assembly factor during DNA replication and repair. [provided by RefSeq, Jul 2008]
Molecular Mass	49.4 kDa
AA Sequence	MAKVQVNNVVVLDNPSPFYNPQFEITFECIEDLSEDLWKIIVGSAESEEYDQVLD SVLVGPVPAGRHMVFVQADAPNPGLIPDADAVGVTVVLITCTYRGQEFIRVGYVNN EYTETELRENPPVKPDFSKLQRNILASNPRVTRFHINWEDNTEKLEDAESSNPNLQS LLSTDALPSASKGWSTSENLSLNVMLESHMDCM
Applications	Enzyme-linked Immunoabsorbent Assay; Western Blot (Recombinant protein); Antibody Production; Protein Array
Notes	Best use within three months from the date of receipt of this protein.

 Tel: 1-631-559-9269 1-516-512-3133

 Email: info@creative-biomart.com  Fax: 1-631-938-8127

 45-1 Ramsey Road, Shirley, NY 11967, USA

Storage Store at -80 centigrade. Aliquot to avoid repeated freezing and thawing.

Storage Buffer 50 mM Tris-HCl, 10 mM reduced Glutathione, pH=8.0 in the elution buffer.

GENE INFORMATION

Gene Name ASF1A ASF1 anti-silencing function 1 homolog A (*S. cerevisiae*) [*Homo sapiens*]

Official Symbol ASF1A

Synonyms ASF1A; ASF1 anti-silencing function 1 homolog A (*S. cerevisiae*); histone chaperone ASF1A; CIA; DKFZP547E2110; hCIA; hAsf1; hAsf1a; CCG1-interacting factor A; anti-silencing function 1A; anti-silencing function protein 1 homolog A; CGI-98; HSPC146;

Gene ID 25842

mRNA Refseq NM_014034

Protein Refseq NP_054753

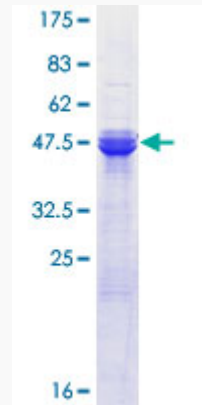
MIM 609189

UniProt ID Q9Y294

 Tel: 1-631-559-9269 1-516-512-3133

 Email: info@creative-biomart.com  Fax: 1-631-938-8127

 45-1 Ramsey Road, Shirley, NY 11967, USA



12.5% SDS-PAGE Stained with Coomassie Blue.

Tel: 1-631-559-9269 1-516-512-3133

Email: info@creative-biomart.com Fax: 1-631-938-8127

45-1 Ramsey Road, Shirley, NY 11967, USA