

Recombinant Human ASMT protein, GST-tagged

Cat. No. ASMT-911H Lot. No. (See product label)

SPECIFICATION

Product Overview	Human ASMT partial ORF (NP_004034, 71 a.a. - 170 a.a.) recombinant protein with GST-tag at N-terminal.
Species	Human
Source	Wheat Germ
Description	This gene belongs to the methyltransferase superfamily, and is located in the pseudoautosomal region (PAR) at the end of the short arms of the X and Y chromosomes. The encoded enzyme catalyzes the final reaction in the synthesis of melatonin, and is abundant in the pineal gland. Alternatively spliced transcript variants have been noted for this gene. [provided by RefSeq, Jan 2010]
Molecular Mass	36.74 kDa
AA Sequence	KLLKVETRGGKAFYRNTELSSDYLTTVSPTSQC SMLKYMGRTSYRCWGH LADAVR EGRNQYLETFGVPAEELFTAIYRSEGERLQFMQALQE VWSVNGRS
Applications	Enzyme-linked Immunoabsorbent Assay; Western Blot (Recombinant protein); Antibody Production; Protein Array
Notes	Best use within three months from the date of receipt of this protein.
Storage	Store at -80 centigrade. Aliquot to avoid repeated freezing and thawing.

 Tel: 1-631-559-9269 1-516-512-3133

 Email: info@creative-biomart.com  Fax: 1-631-938-8127

 45-1 Ramsey Road, Shirley, NY 11967, USA

Storage Buffer 50 mM Tris-HCl, 10 mM reduced Glutathione, pH=8.0 in the elution buffer.

GENE INFORMATION

Gene Name [ASMT acetylserotonin O-methyltransferase \[Homo sapiens \]](#)

Official Symbol [ASMT](#)

Synonyms ASMT; acetylserotonin O-methyltransferase; ASMTY; HIOMT; HIOMTY; hydroxyindole O-methyltransferase; acetylserotonin N-methyltransferase; acetylserotonin methyltransferase (Y chromosome);

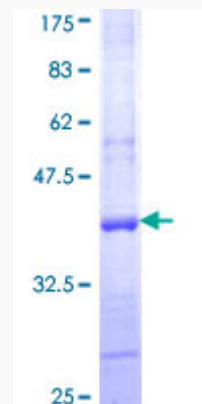
Gene ID [438](#)

mRNA Refseq [NM_001171038](#)

Protein Refseq [NP_001164509](#)

MIM [300015](#)

UniProt ID [P46597](#)



 Tel: 1-631-559-9269 1-516-512-3133

 Email: info@creative-biomart.com  Fax: 1-631-938-8127

 45-1 Ramsey Road, Shirley, NY 11967, USA



12.5% SDS-PAGE Stained with Coomassie Blue.

 Tel: 1-631-559-9269 1-516-512-3133

 Email: info@creative-biomart.com  Fax: 1-631-938-8127

 45-1 Ramsey Road, Shirley, NY 11967, USA