

## Recombinant Human ASNA1 protein, GST-tagged

Cat. No. ASNA1-913H Lot. No. (See product label)

### SPECIFICATION

**Product Overview** Human ASNA1 full-length ORF ( AAH02651.1, 1 a.a. - 348 a.a.) recombinant protein with GST-tag at N-terminal.

**Species** Human

**Source** Wheat Germ

**Description** This gene represents the human homolog of the bacterial *arsA* gene, encoding the arsenite-stimulated ATPase component of the arsenite transporter responsible for resistance to arsenicals. This protein is also a central component of a transmembrane domain (TMD) recognition complex (TRC) that is involved in the post-translational delivery of tail-anchored (TA) proteins from the cytosol to the endoplasmic reticulum (ER). It recognizes and selectively binds the TMD of TA proteins in the cytosol, and delivers them to the ER for insertion. [provided by RefSeq, Oct 2011]

**Molecular Mass** 65.2 kDa

**AA Sequence**  
MAAGVAGWGVEAEFEEDAPDVEPLEPTLSNIIQRSLKWIFVGGKGGVGKTTCS  
LAVQLSKGRESVLIISTDPAHNISDAFDQKFSKVPTKVKGYNLFAEIDPSLGVAEL  
PDEFFEDNMLSMGKMMQEAMSAFPGIDEAMSYAEVMRLVKGMNFSVVVFDTAP  
TGHTLRLNFTIVERGLGRMLQIKNQISPFISQMCNMLGLGDMNADQLASKLEETLP  
VIRSVSEQFKDPEQTTFCVCAEFLSLYETERLIQELAKCKIDTHNIIVNQLVFPDPEKP  
CKMCEARHKIQAKYLDQMEDLYEDFHIVKLPPLPHEVRGADKVNTFSALLLEPYKPP  
SAQ

 Tel: 1-631-559-9269 1-516-512-3133

 Email: [info@creative-biomart.com](mailto:info@creative-biomart.com)  Fax: 1-631-938-8127

 45-1 Ramsey Road, Shirley, NY 11967, USA

<b>Applications</b>	Enzyme-linked Immunoabsorbent Assay; Western Blot (Recombinant protein); Antibody Production; Protein Array
<b>Notes</b>	Best use within three months from the date of receipt of this protein.
<b>Storage</b>	Store at -80 centigrade. Aliquot to avoid repeated freezing and thawing.
<b>Storage Buffer</b>	50 mM Tris-HCl, 10 mM reduced Glutathione, pH=8.0 in the elution buffer.
<b>GENE INFORMATION</b>	
<b>Gene Name</b>	ASNA1 arsA arsenite transporter, ATP-binding, homolog 1 (bacterial) [ Homo sapiens ]
<b>Official Symbol</b>	ASNA1
<b>Synonyms</b>	ASNA1; arsA arsenite transporter, ATP-binding, homolog 1 (bacterial); arsA (bacterial) arsenite transporter, ATP binding, homolog 1; ATPase ASNA1; ARSA I; GET3; golgi to ER traffic 3 homolog (S. cerevisiae); transmembrane domain recognition complex; 40kDa; TRC40; arsenite-stimulated ATPase; arsenical pump-driving ATPase; golgi to ER traffic 3 homolog; transmembrane domain recognition complex, 40kDa; transmembrane domain recognition complex 40 kDa ATPase subunit; ARSA1; ARSA-I; ASNA-I; hASNA-I; MGC3821;
<b>Gene ID</b>	439
<b>mRNA Refseq</b>	NM_004317
<b>Protein Refseq</b>	NP_004308
<b>MIM</b>	601913

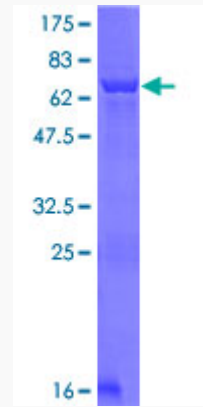
 Tel: 1-631-559-9269 1-516-512-3133

 Email: [info@creative-biomart.com](mailto:info@creative-biomart.com)  Fax: 1-631-938-8127

 45-1 Ramsey Road, Shirley, NY 11967, USA

UniProt ID

O43681



12.5% SDS-PAGE Stained with Coomassie Blue.

 Tel: 1-631-559-9269 1-516-512-3133

 Email: [info@creative-biomart.com](mailto:info@creative-biomart.com)  Fax: 1-631-938-8127

 45-1 Ramsey Road, Shirley, NY 11967, USA