

## Recombinant Human ASNSD1 protein, GST-tagged

Cat. No. ASNSD1-915H Lot. No. (See product label)

### SPECIFICATION

**Product Overview** Human ASNSD1 full-length ORF ( NP\_061921.1, 1 a.a. - 643 a.a.) recombinant protein with GST-tag at N-terminal.

**Species** Human

**Source** Wheat Germ

**Description** ASNSD1 (Asparagine Synthetase Domain Containing 1) is a Protein Coding gene. GO annotations related to this gene include asparagine synthase (glutamine-hydrolyzing) activity.

**Molecular Mass** 98.6 kDa

**AA Sequence**

```
MCGICCSVNFSAEHFSQDLKEDLLYNLKQRGPNSSKQLLKSDVNYQCLFSAHVLHL
RGVLTTPVEDERGNVFLWNGEIFSGIKVEAEENDTQILFNYLSSCKNESEILSLFSE
VQGPWSFIYYQASSHYLWFGRRDFFGRRSLLWHFSNLGKSFCLSSVGTQTSGLANQ
WQEV PASGLFRIDLKSTVISRCIILQLYPWKYISRENIIEENVNSLSQISADLPAFVSVV
ANEAKLYLEKPVVPLNMMLPQAALETHCSNISNVPPTREILQVFLTDVHMKEVIQQFI
DVLSVAVKRVLCLPRDENLTANEVLKTCDRKANVAILFSGGIDSMVIATLADRHIPLD
EPIDLLNVAFIAEEKTMPTTFNREGNKQKNKCEIPSEEFKDVAAAAADSPNKHVSVP
DRITGRAGLQAVSPSRIWNFVEINVSMEELQKLRTRICHLIRPLDVLDDSIGCA
VWFASRGIGWLVAQEGVKSYSNAKVVLTGIGADEQLAGYSRHRVRFQSHGLEGL
NKEIMMELGRISSRNLRDDRIGDHGKEARFPFLDENVVSFLNSLPIWEKANLTP
RGIGEKLLLRLAAVELGLTASALLPKRAMQFGSRIAKMEKINEKASDKCGRLQIMSLE
```

 Tel: 1-631-559-9269 1-516-512-3133

 Email: [info@creative-biomart.com](mailto:info@creative-biomart.com)  Fax: 1-631-938-8127

 45-1 Ramsey Road, Shirley, NY 11967, USA

NLSIEKETKL

**Applications**

Enzyme-linked Immunoabsorbent Assay; Western Blot (Recombinant protein); Antibody Production; Protein Array

**Notes**

Best use within three months from the date of receipt of this protein.

**Storage**

Store at -80 centigrade. Aliquot to avoid repeated freezing and thawing.

**Storage Buffer**

50 mM Tris-HCl, 10 mM reduced Glutathione, pH=8.0 in the elution buffer.

## GENE INFORMATION

**Gene Name**

ASNSD1 asparagine synthetase domain containing 1 [ Homo sapiens ]

**Official Symbol**

ASNSD1

**Synonyms**

ASNSD1; asparagine synthetase domain containing 1; asparagine synthetase domain-containing protein 1; FLJ20752; NBLA00058; NS3TP1; HCV NS3-transactivated protein 1;

**Gene ID**

54529

**mRNA Refseq**

NM\_019048

**Protein Refseq**

NP\_061921

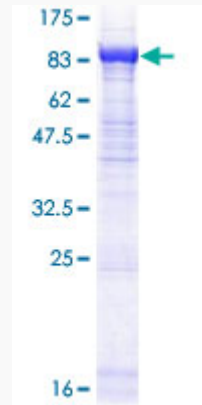
**UniProt ID**

Q9NWL6

 Tel: 1-631-559-9269 1-516-512-3133

 Email: [info@creative-biomart.com](mailto:info@creative-biomart.com)  Fax: 1-631-938-8127

 45-1 Ramsey Road, Shirley, NY 11967, USA



12.5% SDS-PAGE Stained with Coomassie Blue.

Tel: 1-631-559-9269 1-516-512-3133

Email: [info@creative-biomart.com](mailto:info@creative-biomart.com) Fax: 1-631-938-8127

45-1 Ramsey Road, Shirley, NY 11967, USA