

Recombinant Human ASPA Protein, Myc/DDK-tagged, C13 and N15-labeled

Cat. No. ASPA-1936H **Lot. No.** (See product label)

SPECIFICATION

Product Overview	ASPA MS Standard C13 and N15-labeled recombinant protein (NP_000040) with a C-terminal MYC/DDK tag, was expressed in HEK293 cells.
Species	Human
Source	HEK293
Description	This gene encodes an enzyme that catalyzes the conversion of N-acetyl_L-aspartic acid (NAA) to aspartate and acetate. NAA is abundant in the brain where hydrolysis by aspartoacylase is thought to help maintain white matter. This protein is an NAA scavenger in other tissues. Mutations in this gene cause Canavan disease. Alternatively spliced transcript variants have been found for this gene.
Molecular Mass	35.7 kDa
AA Sequence	<p>MTSCHIAEEHIQKVAIFGGTHGNELTGVFLVKHWLENGAEIQRTGLEVKPFITNPRAV KKCTRYIDCDLNRIFDLENLGKKMSEDLPEVRRRAQEIHLFGPKDSEDSYDIIFDLH NTTSNMGCTLILEDNRNFIQMFHYIKTSLAPLPCYVYLIEHPSLKYATTRSIAKYPV GIEVGPQPQGVLRADILDQMRKMIKHALDFIHHFNEGKEFPPCAIEVYKIIIEKVDYPRD ENGEIAAIIHPNLQDQDWKPLHPGDPMFLTLDGKTIPLGGDCTVYPVVFVNEAAYYEK KEAFAKTTKLTNAKSIRCCLHTRTRPLEQKLISEEDLAANDILDYKDDDDKV</p>
Purity	> 80% as determined by SDS-PAGE and Coomassie blue staining

 Tel: 1-631-559-9269 1-516-512-3133

 Email: info@creative-biomart.com  Fax: 1-631-938-8127

 45-1 Ramsey Road, Shirley, NY 11967, USA

Stability	Stable for 3 months from receipt of products under proper storage and handling conditions.
Storage	Store at -80 centigrade. Avoid repeated freeze-thaw cycles.
Concentration	50 µg/mL as determined by BCA
Storage Buffer	100 mM glycine, 25 mM Tris-HCl, pH 7.3.

GENE INFORMATION

Gene Name	ASPA aspartoacylase [Homo sapiens (human)]
Official Symbol	ASPA
Synonyms	ASPA; aspartoacylase; aspartoacylase (aminoacylase 2, Canavan disease); ACY2; aminoacylase 2; ASP; Canavan disease; ACY-2; aminoacylase-2;
Gene ID	443
mRNA Refseq	NM_000049
Protein Refseq	NP_000040
MIM	608034
UniProt ID	P45381

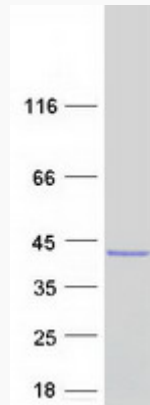
 Tel: 1-631-559-9269 1-516-512-3133

 Email: info@creative-biomart.com  Fax: 1-631-938-8127

 45-1 Ramsey Road, Shirley, NY 11967, USA



SDS-PAGE



Tel: 1-631-559-9269 1-516-512-3133

Email: info@creative-biomart.com Fax: 1-631-938-8127

45-1 Ramsey Road, Shirley, NY 11967, USA