

# Recombinant Human ASPH Protein, Myc/DDK-tagged, C13 and N15-labeled

Cat. No. ASPH-4988H Lot. No. (See product label)

## SPECIFICATION

<b>Product Overview</b>	ASPH MS Standard C13 and N15-labeled recombinant protein (NP_115855) with a C-terminal MYC/DDK tag, was expressed in HEK293 cells.
<b>Species</b>	Human
<b>Source</b>	HEK293
<b>Description</b>	<p>This gene is thought to play an important role in calcium homeostasis. The gene is expressed from two promoters and undergoes extensive alternative splicing. The encoded set of proteins share varying amounts of overlap near their N-termini but have substantial variations in their C-terminal domains resulting in distinct functional properties. The longest isoforms (a and f) include a C-terminal Aspartyl/Asparaginyl beta-hydroxylase domain that hydroxylates aspartic acid or asparagine residues in the epidermal growth factor (EGF)-like domains of some proteins, including protein C, coagulation factors VII, IX, and X, and the complement factors C1R and C1S. Other isoforms differ primarily in the C-terminal sequence and lack the hydroxylase domain, and some have been localized to the endoplasmic and sarcoplasmic reticulum. Some of these isoforms are found in complexes with calsequestrin, triadin, and the ryanodine receptor, and have been shown to regulate calcium release from the sarcoplasmic reticulum. Some isoforms have been implicated in metastasis.</p>
<b>Molecular Mass</b>	34.5 kDa

 Tel: 1-631-559-9269 1-516-512-3133

 Email: [info@creative-biomart.com](mailto:info@creative-biomart.com)  Fax: 1-631-938-8127

 45-1 Ramsey Road, Shirley, NY 11967, USA

**AA Sequence**

MAQRKNAKSSGNSSSSSGSGSGSTSAGSSSPGARRETKHGGHKNGRKGGLSGTSTF  
 FTWFMVIALLGWVTSVAVVWFDLVDYEEVLGKLGIIYDADGDGDFDVDDAKVLLGLK  
 ERSTSEPAVPPEEAEPHTEPEEQVPVEAEPQNIEDAKEQIQSLLHEMVHAEHVEGE  
 DLQQEDGPTGEPQQEDDEFMATDVEDDRFETLEPEVSHEETEHSYHVEETVSQDC  
 NQDMEEMMSEQENPDSSEPVEDERLHHDTDDVTYQVYEEQAVYEPLENEGIEITE  
 VTAPPEDNPVEDSQVIVEEVSIFPVVEEQQEVPPDTTRTRPLEQKLISEEDLAANDILD  
 YKDDDDKV

**Purity** > 80% as determined by SDS-PAGE and Coomassie blue staining

**Stability** Stable for 3 months from receipt of products under proper storage and handling conditions.

**Storage** Store at -80 centigrade. Avoid repeated freeze-thaw cycles.

**Concentration** 50 µg/mL as determined by BCA

**Storage Buffer** 100 mM glycine, 25 mM Tris-HCl, pH 7.3.

## GENE INFORMATION

**Gene Name** ASPH aspartate beta-hydroxylase [ Homo sapiens (human) ]

**Official Symbol** ASPH

**Synonyms** ASPH; aspartate beta-hydroxylase; aspartyl/asparaginyl beta-hydroxylase; BAH; CASQ2BP1; HAAH; humbug; JCTN; junctate; junctin; A beta H-J-J; cardiac junctin; ASP beta-hydroxylase; peptide-aspartate beta-dioxygenase; aspartyl/asparaginyl-beta-hydroxylase; AAH;

**Gene ID** 444

 Tel: 1-631-559-9269 1-516-512-3133

 Email: [info@creative-biomart.com](mailto:info@creative-biomart.com)  Fax: 1-631-938-8127

 45-1 Ramsey Road, Shirley, NY 11967, USA

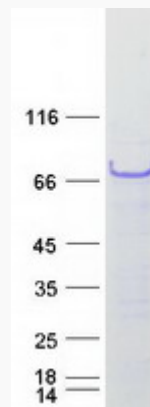
mRNA Refseq [NM\\_032466](#)

Protein Refseq [NP\\_115855](#)

MIM [600582](#)

UniProt ID [Q12797](#)

SDS-PAGE



 Tel: 1-631-559-9269 1-516-512-3133

 Email: [info@creative-biomart.com](mailto:info@creative-biomart.com)  Fax: 1-631-938-8127

 45-1 Ramsey Road, Shirley, NY 11967, USA