

# Recombinant Full Length Human ASPH Protein, C-Flag-tagged

Cat. No. ASPH-506HFL Lot. No. (See product label)

## SPECIFICATION

**Product Overview** Recombinant Full Length Human ASPH Protein, fused to Flag-tag at C-terminus, was expressed in Mammalian cells.

**Species** Human

**Source** Mammalian Cells

**Description** This gene is thought to play an important role in calcium homeostasis. The gene is expressed from two promoters and undergoes extensive alternative splicing. The encoded set of proteins share varying amounts of overlap near their N-termini but have substantial variations in their C-terminal domains resulting in distinct functional properties. The longest isoforms (a and f) include a C-terminal Aspartyl/Asparaginyl beta-hydroxylase domain that hydroxylates aspartic acid or asparagine residues in the epidermal growth factor (EGF)-like domains of some proteins, including protein C, coagulation factors VII, IX, and X, and the complement factors C1R and C1S. Other isoforms differ primarily in the C-terminal sequence and lack the hydroxylase domain, and some have been localized to the endoplasmic and sarcoplasmic reticulum. Some of these isoforms are found in complexes with calsequestrin, triadin, and the ryanodine receptor, and have been shown to regulate calcium release from the sarcoplasmic reticulum. Some isoforms have been implicated in metastasis.

**Form** 25 mM Tris HCl, pH 7.3, 100 mM glycine, 10% glycerol.

**Molecular Mass** 85.7 kDa

 Tel: 1-631-559-9269 1-516-512-3133

 Email: [info@creative-biomart.com](mailto:info@creative-biomart.com)  Fax: 1-631-938-8127

 45-1 Ramsey Road, Shirley, NY 11967, USA

**AA Sequence**

MAQRKNAKSSGNSSSSSGSGSGSTSAGSSSPGARRETKHGGHKNGRKGGLSGTSF  
 FTWFMVIALLGWVTSV AVVWFDLVDYEEVLGKLGIIYDADGDGDFDVEDDAKVLLGLK  
 ERSTSEPAVPPEEAEPHTEPEEQVPVEAEP QNIEDEAKEQIQSLLHEMVHAEHVEG  
 EDLQQEDGPTGEPQQEDDEFMATDVDDRFETLEPEVSHEETEH SYHVEETVSQD  
 CNQDMEEMMSEQENPDSSEPVEDERLHHDTDDVTYQVYEEQAVYEPLENEGIEIT  
 EVT APPEDNPVEDSQVIVEEVSIFPVEEQQEVPPETNRKTDDPEQKAKVKKKKPKLL  
 NKFDKTIKAEKDAAEK LRKRGKIEEAVNAFKELVRKYPQSPRARYGKAQCEDDLAEK  
 RRSNEVLRGAIETYQEVASLPDVPADLLK LSLKRRSDRQQFLGHMRGSLTLQRLV  
 QLFPNDTSLKNDLGVGYLLIGDNDNAKKVYEEVLSVTPNDGFA KVHYGFILKAQNKI  
 AESIPYLKEGIESGDPGTDGDRFYFHLGDAMQRVGNKEAYKWYELGHKRGHFASV  
 W QRSLYNVNGLKAQPWWTPKETGYTELVKSLERNWKLIRDEGLAVMDKAKGLFLP  
 EDENLREKGDWSQFTL WQQGRRNENACKGAPKTCTLLEKFPETTGCRRGQIKYSI  
 MHPGTHVWPHTGPTNCRFRMHLGLVIPKEGC  
 KIRCANETKTWEEGKVLIFDSDFEHEVWQDASSFRLIFIVDVWHPPELTPQQRRSLPAI  
 TRTRPLEQKLISEEDLAANDILDYKDDDDKV

**Purity**

> 80% as determined by SDS-PAGE and Coomassie blue staining.

**Stability**

Stable for 12 months from the date of receipt of the product under proper storage and handling conditions. Avoid repeated freeze-thaw cycles.

**Storage**

Store at -80 centigrade.

**Concentration**

>50 ug/mL as determined by microplate BCA method.

**Preparation**

Recombinant protein was captured through anti-DDK affinity column followed by conventional chromatography steps.

**Protein Families**

Druggable Genome, Transmembrane

 Tel: 1-631-559-9269 1-516-512-3133

 Email: [info@creative-biomart.com](mailto:info@creative-biomart.com)  Fax: 1-631-938-8127

 45-1 Ramsey Road, Shirley, NY 11967, USA

Full Length Full L.

## GENE INFORMATION

**Gene Name** ASPH aspartate beta-hydroxylase [ Homo sapiens (human) ]

**Official Symbol** ASPH

**Synonyms** AAH; BAH; HAAH; JCTN; FDLAB; junctin; CASQ2BP1

**Gene ID** 444

**mRNA Refseq** NM\_004318.4

**Protein Refseq** NP\_004309.2

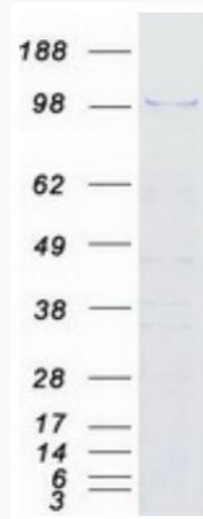
**MIM** 600582

**UniProt ID** Q12797

 Tel: 1-631-559-9269 1-516-512-3133

 Email: [info@creative-biomart.com](mailto:info@creative-biomart.com)  Fax: 1-631-938-8127

 45-1 Ramsey Road, Shirley, NY 11967, USA



Coomassie blue staining of purified ASPH protein.

 Tel: 1-631-559-9269 1-516-512-3133

 Email: [info@creative-biomart.com](mailto:info@creative-biomart.com)  Fax: 1-631-938-8127

 45-1 Ramsey Road, Shirley, NY 11967, USA