

## Recombinant Human ASPH protein, GST-tagged

Cat. No. ASPH-917H Lot. No. (See product label)

### SPECIFICATION

<b>Product Overview</b>	Human ASPH full-length ORF ( NP_115856.1, 1 a.a. - 210 a.a.) recombinant protein with GST-tag at N-terminal.
<b>Species</b>	Human
<b>Source</b>	Wheat Germ
<b>Molecular Mass</b>	50.2 kDa
<b>AA Sequence</b>	MAEDKETKHGGHKNGRKGGLSGTSFFTWFMVIALLGVWTSVAVVWFDLVDYEEVL GKLGIDADGDGDFDVDDAKVLLEGPSVAKRKTAKVKELTKEELKKEKEKPE KESKNEERKKGKEDVVRKDKKIADADLSRKESPKGKKDREKEKVDLEKSAKTKENR KKSTNMKDVSSKMASRDKDDRKESRSSTRYAHLTGNTQKRNG
<b>Applications</b>	Enzyme-linked Immunoabsorbent Assay; Western Blot (Recombinant protein); Antibody Production; Protein Array
<b>Notes</b>	Best use within three months from the date of receipt of this protein.
<b>Storage</b>	Store at -80 centigrade. Aliquot to avoid repeated freezing and thawing.
<b>Storage Buffer</b>	50 mM Tris-HCl, 10 mM reduced Glutathione, pH=8.0 in the elution buffer.

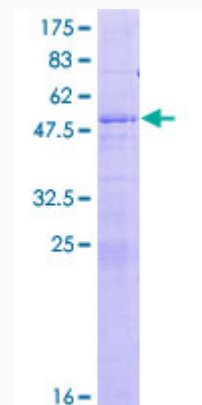
### GENE INFORMATION

 Tel: 1-631-559-9269 1-516-512-3133

 Email: [info@creative-biomart.com](mailto:info@creative-biomart.com)  Fax: 1-631-938-8127

 45-1 Ramsey Road, Shirley, NY 11967, USA

<b>Gene Name</b>	ASPH aspartate beta-hydroxylase [ Homo sapiens ]
<b>Official Symbol</b>	ASPH
<b>Synonyms</b>	ASPH; aspartate beta-hydroxylase; aspartyl/asparaginyl beta-hydroxylase; BAH; CASQ2BP1; HAAH; humbug; JCTN; junctate; junctin; A beta H-J-J; cardiac junctin; ASP beta-hydroxylase; peptide-aspartate beta-dioxygenase; aspartyl/asparaginyl-beta-hydroxylase; AAH;
<b>Gene ID</b>	444
<b>mRNA Refseq</b>	NM_001164750
<b>Protein Refseq</b>	NP_001158222
<b>MIM</b>	600582
<b>UniProt ID</b>	Q12797



12.5% SDS-PAGE Stained with Coomassie Blue.

 Tel: 1-631-559-9269 1-516-512-3133

 Email: [info@creative-biomart.com](mailto:info@creative-biomart.com)  Fax: 1-631-938-8127

 45-1 Ramsey Road, Shirley, NY 11967, USA