

# Recombinant Human ASPSCR1 Protein, Myc/DDK-tagged, C13 and N15-labeled

**Cat. No.** ASPSCR1-4790H    **Lot. No.** (See product label)

## SPECIFICATION

<b>Product Overview</b>	ASPSCR1 MS Standard C13 and N15-labeled recombinant protein (NP_076988) with a C-terminal MYC/DDK tag, was expressed in HEK293 cells.
<b>Species</b>	Human
<b>Source</b>	HEK293
<b>Description</b>	The protein encoded by this gene contains a UBX domain and interacts with glucose transporter type 4 (GLUT4). This protein is a tether, which sequesters the GLUT4 in intracellular vesicles in muscle and fat cells in the absence of insulin, and redistributes the GLUT4 to the plasma membrane within minutes of insulin stimulation. Translocation t(X;17)(p11;q25) of this gene with transcription factor TFE3 gene results in a ASPSCR1-TFE3 fusion protein in alveolar soft part sarcoma and in renal cell carcinomas. Multiple alternatively spliced transcript variants have been found.
<b>Molecular Mass</b>	60.2 kDa
<b>AA Sequence</b>	MAAPAGGGGSAVSVLAPNGRRHTVKVTPSTVLLQVLEDCRRQDFNPCEYDLKFQ RSVLDLSLQWRFANLPNNAKLEMVPASRSREGPENMVRIALQLDDGSRLLQDSFCS GQTLWELLSHFPQIRECLQHPGGATPVCVYTRDEVTGEAALRGTTLQSLGLTGGSA TIRFVMKCYDPVGKTPGSLGSSASAGQAAASAPLPLESGELSRGDLSRPEDADTSG PCCEHTQEKQSTRAPAAAPFVFPFSGGGQRQGGPPGPTRPLTSSSAKLPKSLSSPG

 Tel: 1-631-559-9269    1-516-512-3133

 Email: [info@creative-biomart.com](mailto:info@creative-biomart.com)     Fax: 1-631-938-8127

 45-1 Ramsey Road, Shirley, NY 11967, USA

GPSKPKKSKSGQDPQQEQEQERERDPQQEQERERPVDREPVDREPVVCHPDLEE  
 RLQAWPAELPDEFFELTVDDVRRRLAQLKSERKRLEEAPLVTKAFREAQIKEKLERY  
 PKVALRVLPDRYVLQGGFRPSETVGDLRDFVRSHLGNPELSFYLFITPPKTVLDDHT  
 QTLFQANLFPAALVHLGAEEPAGVYLEPGLLEHAISPSAADVLVARYMSRAAGSPSP  
 LPAPDPAPKSEPAEEGALVPPEPIPGTAQPVKRSLGKVPKWLKLPASKRTRTRPLE  
 QKLISEEDLAANDILDYKDDDDKV

**Purity** > 80% as determined by SDS-PAGE and Coomassie blue staining

**Stability** Stable for 3 months from receipt of products under proper storage and handling conditions.

**Storage** Store at -80 centigrade. Avoid repeated freeze-thaw cycles.

**Concentration** 50 µg/mL as determined by BCA

**Storage Buffer** 100 mM glycine, 25 mM Tris-HCl, pH 7.3.

## GENE INFORMATION

**Gene Name** [ASPSCR1 ASPSCR1 tether for SLC2A4, UBX domain containing \[ Homo sapiens \(human\) \]](#)

**Official Symbol** [ASPSCR1](#)

**Synonyms** ASPSCR1; alveolar soft part sarcoma chromosome region, candidate 1; tether containing UBX domain for GLUT4; ASPL; ASPS; UBX domain protein 9; UBXD9; UBXN9; UBX domain-containing protein 9; alveolar soft part sarcoma locus; renal cell carcinoma, papillary, 17; renal papillary cell carcinoma protein 17; renal cell carcinoma gene on chromosome 17; alveolar soft part sarcoma chromosomal region candidate gene 1 protein; TUG; RCC17; ASPSCR1; FLJ45380;

 Tel: 1-631-559-9269 1-516-512-3133

 Email: [info@creative-biomart.com](mailto:info@creative-biomart.com)  Fax: 1-631-938-8127

 45-1 Ramsey Road, Shirley, NY 11967, USA

**Gene ID** 79058

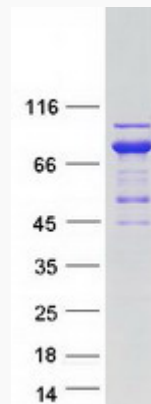
**mRNA Refseq** NM\_024083

**Protein Refseq** NP\_076988

**MIM** 606236

**UniProt ID** Q9BZE9

**SDS-PAGE**



 Tel: 1-631-559-9269 1-516-512-3133

 Email: [info@creative-biomart.com](mailto:info@creative-biomart.com)  Fax: 1-631-938-8127

 45-1 Ramsey Road, Shirley, NY 11967, USA