

Recombinant Human ASRGL1 Protein, Myc/DDK-tagged, C13 and N15-labeled

Cat. No. ASRGL1-5424H **Lot. No.** (See product label)

SPECIFICATION

Product Overview

ASRGL1 MS Standard C13 and N15-labeled recombinant protein (NP_079356) with a C-terminal MYC/DDK tag, was expressed in HEK293 cells.

Species

Human

Source

HEK293

Description

ASRGL1 (Asparaginase And Isoaspartyl Peptidase 1) is a Protein Coding gene. Diseases associated with ASRGL1 include Prostatic Urethral Cancer and Male Urethral Cancer. Among its related pathways are Histidine, lysine, phenylalanine, tyrosine, proline and tryptophan catabolism and Viral mRNA Translation. Gene Ontology (GO) annotations related to this gene include hydrolase activity and asparaginase activity. An important paralog of this gene is TASP1.

Molecular Mass

31.9 kDa

AA Sequence

MNPIVVHGGGAGPISKDRKERVHQGMVRAATVGYGILREGGSAVDAVEGAVVALE
 DDPEFNAGCGSVLNTNGEVEMDASIMDGKDLASAGAVSAVQCIANPIKLARLVMEKT
 PHCFLTDQGAQFAAAMGVPEIPGEKLVTERNKKRLEKEKHEKGAQKTDCCQKNLGT
 VGAVALDCKGNVAYATSTGGIVNKMVGRVGDSPCLGAGGYADNDIGAVSTTGHGE
 SILKVNLARLTLFHIEQGKTVEEAADLSLGYMKSrvKGLGGLIVVSKTGDWVAKWTS
 TSMPWAAAKDGKLFHGIDPDDTTITDLPTTRTRPLEQKLISEEDLAANDILDYKDDDDK
 V

 Tel: 1-631-559-9269 1-516-512-3133

 Email: info@creative-biomart.com  Fax: 1-631-938-8127

 45-1 Ramsey Road, Shirley, NY 11967, USA

Purity	> 80% as determined by SDS-PAGE and Coomassie blue staining
Stability	Stable for 3 months from receipt of products under proper storage and handling conditions.
Storage	Store at -80 centigrade. Avoid repeated freeze-thaw cycles.
Concentration	50 µg/mL as determined by BCA
Storage Buffer	100 mM glycine, 25 mM Tris-HCl, pH 7.3.

GENE INFORMATION

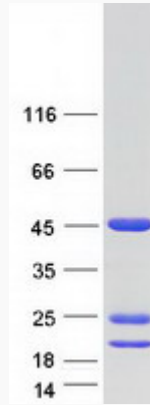
Gene Name	ASRGL1 asparaginase and isoaspartyl peptidase 1 [Homo sapiens (human)]
Official Symbol	ASRGL1
Synonyms	ASRGL1; ALP; ALP1; asparaginase like 1 protein; FLJ22316;
Gene ID	80150
mRNA Refseq	NM_025080
Protein Refseq	NP_079356
MIM	609212
UniProt ID	Q7L266

 Tel: 1-631-559-9269 1-516-512-3133

 Email: info@creative-biomart.com  Fax: 1-631-938-8127

 45-1 Ramsey Road, Shirley, NY 11967, USA

SDS-PAGE



 Tel: 1-631-559-9269 1-516-512-3133

 Email: info@creative-biomart.com  Fax: 1-631-938-8127

 45-1 Ramsey Road, Shirley, NY 11967, USA