

## Recombinant Human ASRGL1 protein, GST-tagged

**Cat. No.** ASRGL1-921H    **Lot. No.** (See product label)

### SPECIFICATION

<b>Product Overview</b>	Human ASRGL1 full-length ORF ( AAH64963, 1 a.a. - 180 a.a.) recombinant protein with GST-tag at N-terminal.
<b>Species</b>	Human
<b>Source</b>	Wheat Germ
<b>Description</b>	ASRGL1 (Asparaginase Like 1) is a Protein Coding gene. Among its related pathways are Metabolism and Histidine, lysine, phenylalanine, tyrosine, proline and tryptophan catabolism. GO annotations related to this gene include hydrolase activity and asparaginase activity. An important paralog of this gene is TASP1.
<b>Molecular Mass</b>	45.54 kDa
<b>AA Sequence</b>	MGVPEIPGEKLVTERNKKRLEKEKHEKGAQKTDCCQKNLGTVGAVALDCKGNVAYAT STGGIVNKMVGRVGDSPCLGAGGYADNDIGAVSTTGHGESILKVNLARLTLFHIEQG KTVEEAADLSLGYMKSRVKGLGGLIVVSKTGDWVAKWTSTSMPWAAAKDGKLFHFI DPDDTTITDLP
<b>Applications</b>	Enzyme-linked Immunoabsorbent Assay; Western Blot (Recombinant protein); Antibody Production; Protein Array
<b>Notes</b>	Best use within three months from the date of receipt of this protein.
<b>Storage</b>	Store at -80 centigrade. Aliquot to avoid repeated freezing and thawing.

 Tel: 1-631-559-9269    1-516-512-3133

 Email: [info@creative-biomart.com](mailto:info@creative-biomart.com)     Fax: 1-631-938-8127

 45-1 Ramsey Road, Shirley, NY 11967, USA

**Storage Buffer** 50 mM Tris-HCl, 10 mM reduced Glutathione, pH=8.0 in the elution buffer.

## GENE INFORMATION

**Gene Name** ASRGL1 asparaginase like 1 [ Homo sapiens (human) ]

**Official Symbol** ASRGL1

**Synonyms** ASRGL1; asparaginase like 1; ALP; ALP1; CRASH; isoaspartyl peptidase/L-asparaginase; L-asparaginase; L-asparagine amidohydrolase; asparaginase-like 1 protein; asparaginase-like protein 1; beta-aspartyl-peptidase; isoaspartyl dipeptidase; testis secretory sperm-binding protein Li 242mP; EC 3.4.19.5; EC 3.5.1.1

**Gene ID** 114242

**mRNA Refseq** NM\_001083926

**Protein Refseq** NP\_001077395

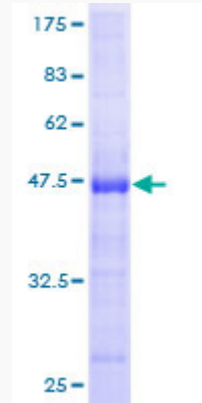
**MIM** 609212

**UniProt ID** Q7L266

 Tel: 1-631-559-9269 1-516-512-3133

 Email: [info@creative-biomart.com](mailto:info@creative-biomart.com)  Fax: 1-631-938-8127

 45-1 Ramsey Road, Shirley, NY 11967, USA



12.5% SDS-PAGE Stained with Coomassie Blue.

 Tel: 1-631-559-9269 1-516-512-3133

 Email: [info@creative-biomart.com](mailto:info@creative-biomart.com)  Fax: 1-631-938-8127

 45-1 Ramsey Road, Shirley, NY 11967, USA