

Recombinant Human ATAD1 Protein, N-His-tagged

Cat. No. ATAD1-06H **Lot. No.** (See product label)

SPECIFICATION

Product Overview	Purified recombinant protein of Human ATPase family, AAA domain containing 1 (ATAD1), Asn277-Gln352, with N-terminal His-ABP tag, expressed in E.coli.
Species	Human
Source	E.coli
ProteinLength	277-352aa
Description	Predicted to enable ATP binding activity and transmembrane protein dislocase activity. Involved in extraction of mislocalized protein from mitochondrial outer membrane. Located in mitochondrial outer membrane and peroxisomal membrane. Implicated in hyperekplexia 4.
Form	50mM Tris, pH8.0, 8M Urea.
Molecular Mass	25.5 kDa
AA Sequence	A DNA sequence encoding the region(Asn277-Gln352) of ATAD1
Purity	> 80% as determined by SDS-PAGE and Coomassie blue staining.
Applications	Cell culture: For culture applications, please filter before use. Note that you may experience some loss of protein during the filtration process.

 Tel: 1-631-559-9269 1-516-512-3133

 Email: info@creative-biomart.com  Fax: 1-631-938-8127

 45-1 Ramsey Road, Shirley, NY 11967, USA

Stability	Stable for at least 1 year from receipt of products under proper storage and handling conditions. Avoid repeated freeze-thaw cycles.
Storage	Store at -80 centigrade after receiving vials.
Concentration	>50 ug/mL as determined by microplate BCA method.

GENE INFORMATION

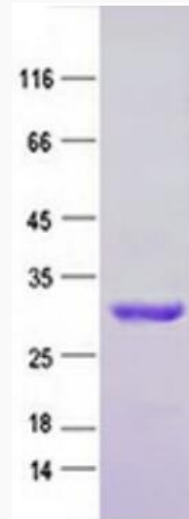
Gene Name	ATAD1 ATPase family AAA domain containing 1 [Homo sapiens (human)]
Official Symbol	ATAD1
Synonyms	Msp1; AFDC1; HKPX4; FNP001; hATAD1; THORASE
Gene ID	84896
mRNA Refseq	NM_032810.4
Protein Refseq	NP_116199.2
MIM	614452
UniProt ID	Q8NBU5

 Tel: 1-631-559-9269 1-516-512-3133

 Email: info@creative-biomart.com  Fax: 1-631-938-8127

 45-1 Ramsey Road, Shirley, NY 11967, USA

SDS-PAGE



Purified recombinant protein ATAD1 was analyzed by SDS-PAGE gel and Coomassie Blue Staining.

 Tel: 1-631-559-9269 1-516-512-3133

 Email: info@creative-biomart.com  Fax: 1-631-938-8127

 45-1 Ramsey Road, Shirley, NY 11967, USA