

## Recombinant Human ATAD1 protein, GST-tagged

**Cat. No.** ATAD1-929H    **Lot. No.** (See product label)

### SPECIFICATION

<b>Product Overview</b>	Human ATAD1 full-length ORF ( AAH10868.1, 1 a.a. - 151 a.a.) recombinant protein with GST-tag at N-terminal.
<b>Species</b>	Human
<b>Source</b>	Wheat Germ
<b>Description</b>	ATAD1 (ATPase Family, AAA Domain Containing 1) is a Protein Coding gene. GO annotations related to this gene include ATPase activity and microtubule-severing ATPase activity.
<b>Molecular Mass</b>	43.7 kDa
<b>AA Sequence</b>	MMKAQFMSLWDGLDTHSCQVIVMGATNRPQDLDSAIMRRMPTRFHINQPALKQR EAILKLILKNENVDRHVDLLEVAQETDGFSGSDLKEMCRDAALLCVREYVNSTSEES HDEDEIRPVQQDLHRAIEKMKKSKDAAFQNVLTHVCLD
<b>Applications</b>	Enzyme-linked Immunoabsorbent Assay; Western Blot (Recombinant protein); Antibody Production; Protein Array
<b>Notes</b>	Best use within three months from the date of receipt of this protein.
<b>Storage</b>	Store at -80 centigrade. Aliquot to avoid repeated freezing and thawing.
<b>Storage Buffer</b>	50 mM Tris-HCl, 10 mM reduced Glutathione, pH=8.0 in the elution buffer.

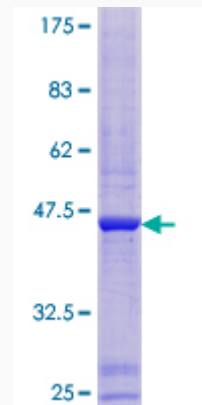
 Tel: 1-631-559-9269    1-516-512-3133

 Email: [info@creative-biomart.com](mailto:info@creative-biomart.com)     Fax: 1-631-938-8127

 45-1 Ramsey Road, Shirley, NY 11967, USA

## GENE INFORMATION

<b>Gene Name</b>	ATAD1 ATPase family, AAA domain containing 1 [ Homo sapiens ]
<b>Official Symbol</b>	ATAD1
<b>Synonyms</b>	ATAD1; ATPase family, AAA domain containing 1; ATPase family AAA domain-containing protein 1; FLJ14600; AFDC1; FNP001; THORASE;
<b>Gene ID</b>	84896
<b>mRNA Refseq</b>	NM_032810
<b>Protein Refseq</b>	NP_116199
<b>MIM</b>	614452
<b>UniProt ID</b>	Q8NBU5



12.5% SDS-PAGE Stained with Coomassie Blue.

 Tel: 1-631-559-9269 1-516-512-3133

 Email: [info@creative-biomart.com](mailto:info@creative-biomart.com)  Fax: 1-631-938-8127

 45-1 Ramsey Road, Shirley, NY 11967, USA