

Recombinant Human ATE1 Protein, Myc/DDK-tagged, C13 and N15-labeled

Cat. No. ATE1-6383H **Lot. No.** (See product label)

SPECIFICATION

Product Overview	ATE1 MS Standard C13 and N15-labeled recombinant protein (NP_008972) with a C-terminal MYC/DDK tag, was expressed in HEK293 cells.
Species	Human
Source	HEK293
Description	This gene encodes an arginyltransferase, an enzyme that is involved in posttranslational conjugation of arginine to N-terminal aspartate or glutamate residues. Conjugation of arginine to the N-terminal aspartate or glutamate targets proteins for ubiquitin-dependent degradation. Alternative splicing results in multiple transcript variants.
Molecular Mass	59 kDa
AA Sequence	MAFWAGGSPSVVDYFPSEDFYRCGYCKNESGSRNSNGMWAHSMTVQDYQDLIDRG WRRSGKYVYKPVMNQTCCPQYTIRCRPLQFQPSKSHKKVLKMLKFLAKGEVPKG SCEDEPMDSTMDDAVAGDFALINKLDIQCDLKTLSDDIKESLESEGKNSKKEEPQEL LQSQDFVGEKLGSGEPSSVVKVHTVPKPGKGADLSKPPCRKAKEIRKERKRLKLMQ QNPAGELEGFQAQGHPPSLFPPKAASNQPKSLEDLIFESLPENASHKLEVRLVPVSF EDPEFKSSFSQSFSLYVKYQVAIHQDPPDECGKTEFTRFLCSSPLEAETPPNGPDC GYGSFHQQYWLDGKIIAVGVIDILPNCVSSVYLYYDPDYSFSLSLGVYSALREIAFTRQ LHEKTSQLSYYYMGFYIHSCPKMKYKGQYRPSDLLCPETYVWVPIEQCLPSLENSKY

 Tel: 1-631-559-9269 1-516-512-3133

 Email: info@creative-biomart.com  Fax: 1-631-938-8127

 45-1 Ramsey Road, Shirley, NY 11967, USA

CRFNQDPEAVDEDRSTEPDRLQVFHKRAIMPYGVYKKQQKDPSEEA AVLQYASLV
GQKCSERMLLFRNTRTRPLEQKLISEEDLAANDILDYKDDDDKV

Purity > 80% as determined by SDS-PAGE and Coomassie blue staining

Stability Stable for 3 months from receipt of products under proper storage and handling conditions.

Storage Store at -80 centigrade. Avoid repeated freeze-thaw cycles.

Concentration 50 µg/mL as determined by BCA

Storage Buffer 100 mM glycine, 25 mM Tris-HCl, pH 7.3.

GENE INFORMATION

Gene Name ATE1 arginyltransferase 1 [Homo sapiens (human)]

Official Symbol ATE1

Synonyms ATE1; arginyltransferase 1; arginyl-tRNA--protein transferase 1; R-transferase 1; arginyl-tRNA-protein transferase; arginine-tRNA--protein transferase 1; MGC26724;

Gene ID 11101

mRNA Refseq NM_007041

Protein Refseq NP_008972

MIM 607103

 Tel: 1-631-559-9269 1-516-512-3133

 Email: info@creative-biomart.com  Fax: 1-631-938-8127

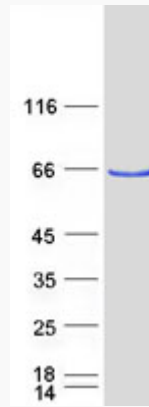
 45-1 Ramsey Road, Shirley, NY 11967, USA



UniProt ID

O95260

SDS-PAGE



Tel: 1-631-559-9269 1-516-512-3133

Email: info@creative-biomart.com Fax: 1-631-938-8127

45-1 Ramsey Road, Shirley, NY 11967, USA