

## Recombinant Human ATF1 Protein (Met1-Val271), C-His-tagged

Cat. No. ATF1-0191H Lot. No. (See product label)

### SPECIFICATION

<b>Product Overview</b>	Recombinant human ATF1 (Met1-Val271) was fused with the C-terminal His tag and was expressed in E. coli.
<b>Species</b>	Human
<b>Source</b>	E.coli
<b>ProteinLength</b>	Met1-Val271
<b>Form</b>	Lyophilized powder/frozen liquid
<b>Molecular Mass</b>	29.81 kDa
<b>Purity</b>	>90% as determined by SDS-PAGE
<b>Notes</b>	For research use only.
<b>Storage</b>	Use a manual defrost freezer and avoid repeated freeze thaw cycles. Store at 2 to 8 centigrade for one week. Store at -20 to -80 centigrade for twelve months from the date of receipt.
<b>Storage Buffer</b>	Supplied as solution form in PBS or lyophilized from PBS.
<b>Reconstitution</b>	Reconstitute in sterile water for a stock solution.

 Tel: 1-631-559-9269 1-516-512-3133

 Email: [info@creative-biomart.com](mailto:info@creative-biomart.com)  Fax: 1-631-938-8127

 45-1 Ramsey Road, Shirley, NY 11967, USA

**Shipping**

They are shipped out with dry ice/blue ice unless customers require otherwise.

**GENE INFORMATION****Gene Name**

ATF1 activating transcription factor 1 [ Homo sapiens (human) ]

**Official Symbol**

ATF1

**Synonyms**

ATF1; activating transcription factor 1; cyclic AMP-dependent transcription factor ATF-1; TREB36; cAMP-dependent transcription factor ATF-1; EWS-ATF1; FUS/ATF-1;

**Gene ID**

466

**mRNA Refseq**

NM\_005171

**Protein Refseq**

NP\_005162

**MIM**

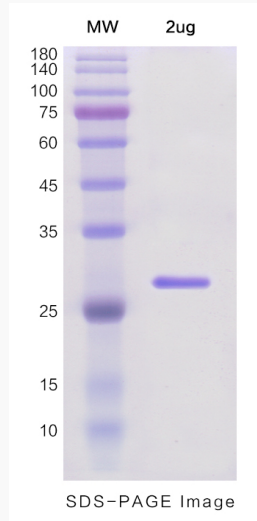
123803

**UniProt ID**

P18846

 Tel: 1-631-559-9269 1-516-512-3133 Email: [info@creative-biomart.com](mailto:info@creative-biomart.com)  Fax: 1-631-938-8127 45-1 Ramsey Road, Shirley, NY 11967, USA

**SDS-PAGE**



 Tel: 1-631-559-9269 1-516-512-3133

 Email: [info@creative-biomart.com](mailto:info@creative-biomart.com)  Fax: 1-631-938-8127

 45-1 Ramsey Road, Shirley, NY 11967, USA