

## Recombinant Human ATF1 protein, GST-tagged

**Cat. No.** ATF1-936H    **Lot. No.** (See product label)

### SPECIFICATION

<b>Product Overview</b>	Human ATF1 full-length ORF ( AAH29619, 1 a.a. - 271 a.a.) recombinant protein with GST-tag at N-terminal.
<b>Species</b>	Human
<b>Source</b>	Wheat Germ
<b>Description</b>	<p>This gene encodes an activating transcription factor, which belongs to the ATF subfamily and bZIP (basic-region leucine zipper) family. It influences cellular physiologic processes by regulating the expression of downstream target genes, which are related to growth, survival, and other cellular activities. This protein is phosphorylated at serine 63 in its kinase-inducible domain by serine/threonine kinases, cAMP-dependent protein kinase A, calmodulin-dependent protein kinase I/II, mitogen- and stress-activated protein kinase and cyclin-dependent kinase 3 (cdk-3). Its phosphorylation enhances its transactivation and transcriptional activities, and enhances cell transformation. Fusion of this gene and FUS on chromosome 16 or EWSR1 on chromosome 22 induced by translocation generates chimeric proteins in angiomatoid fibrous histiocytoma and clear cell sarcoma. This gene has a pseudogene on chromosome 6. [provided by RefSeq, Aug 2010]</p>
<b>Molecular Mass</b>	55.55 kDa
<b>AA Sequence</b>	MEDSHKSTTSETAPQPGSAVQGAHISHIAQQVSSLSESEESQDSSDSIGSSQKAHGI LARRPSYRKILKDLSSDTRGRKGDGENSGVSAAVTSMSPVPTPIYQTSSGQYIAIP

 Tel: 1-631-559-9269    1-516-512-3133

 Email: [info@creative-biomart.com](mailto:info@creative-biomart.com)     Fax: 1-631-938-8127

 45-1 Ramsey Road, Shirley, NY 11967, USA

NGALQLASPGTDGVQGLQTLTMTNSGSTQQGTTILQYAQTS DGQQILVPSNQVVVQ  
TASGDMQTYQIRTTTPSATSLPQTVVMTSPVTLTSQTTKTDDPQLKREIRLMKNREAA  
RECRKKKEYVKLENRVAVLENQNKTLIEELKTLKDLYSNKSV

**Applications**

Enzyme-linked Immunoabsorbent Assay; Western Blot (Recombinant protein);  
Antibody Production; Protein Array

**Notes**

Best use within three months from the date of receipt of this protein.

**Storage**

Store at -80 centigrade. Aliquot to avoid repeated freezing and thawing.

**Storage Buffer**

50 mM Tris-HCl, 10 mM reduced Glutathione, pH=8.0 in the elution buffer.

## GENE INFORMATION

**Gene Name**

[ATF1 activating transcription factor 1 \[ Homo sapiens \]](#)

**Official Symbol**

[ATF1](#)

**Synonyms**

ATF1; activating transcription factor 1; cyclic AMP-dependent transcription factor  
ATF-1; TREB36; cAMP-dependent transcription factor ATF-1; EWS-ATF1; FUS/ATF-  
1;

**Gene ID**

[466](#)

**mRNA Refseq**

[NM\\_005171](#)

**Protein Refseq**

[NP\\_005162](#)

**MIM**

[123803](#)

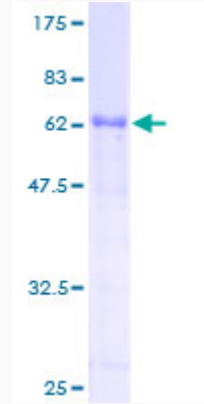
 Tel: 1-631-559-9269 1-516-512-3133

 Email: [info@creative-biomart.com](mailto:info@creative-biomart.com)  Fax: 1-631-938-8127

 45-1 Ramsey Road, Shirley, NY 11967, USA

UniProt ID

P18846



12.5% SDS-PAGE Stained with Coomassie Blue.

 Tel: 1-631-559-9269 1-516-512-3133

 Email: [info@creative-biomart.com](mailto:info@creative-biomart.com)  Fax: 1-631-938-8127

 45-1 Ramsey Road, Shirley, NY 11967, USA