

Recombinant Human ATF2 protein, GST-tagged

Cat. No. ATF2-937H **Lot. No.** (See product label)

SPECIFICATION

Product Overview Human ATF2 full-length ORF (AAH26175, 1 a.a. - 209 a.a.) recombinant protein with GST-tag at N-terminal.

Species Human

Source Wheat Germ

Description This gene encodes a transcription factor that is a member of the leucine zipper family of DNA binding proteins. The encoded protein has been identified as a moonlighting protein based on its ability to perform mechanistically distinct functions This protein binds to the cAMP-responsive element (CRE), an octameric palindrome. It forms a homodimer or a heterodimer with c-Jun and stimulates CRE-dependent transcription. This protein is also a histone acetyltransferase (HAT) that specifically acetylates histones H2B and H4 in vitro; thus it may represent a class of sequence-specific factors that activate transcription by direct effects on chromatin components. The encoded protein may also be involved in cell's DNA damage response independent of its role in transcriptional regulation. Several alternatively spliced transcript variants have been found for this gene [provided by RefSeq, Jan 2014]

Molecular Mass 48.73 kDa

AA Sequence MKFKLVNSARQYKDLWNMSDDKPFLCTAPGCGQRFTNEDHLAVHKHKHEMTLKF
GPARNDSVIVADQTPTPTRFLKNCEEVGLFNELASPFENEFFKKASEDDIKKMPDLDS
PLATPIIRSKIEEPSVVETTHQDSPLPHPESTTSDEKEVPLAQTQAQPTSAIVRPASLQV

 Tel: 1-631-559-9269 1-516-512-3133

 Email: info@creative-biomart.com  Fax: 1-631-938-8127

 45-1 Ramsey Road, Shirley, NY 11967, USA

PNVLLTSSDSSVIIQQAVPSPTSSTVITQAPSSNRPIV

Applications

Enzyme-linked Immunoabsorbent Assay; Western Blot (Recombinant protein); Antibody Production; Protein Array

Notes

Best use within three months from the date of receipt of this protein.

Storage

Store at -80 centigrade. Aliquot to avoid repeated freezing and thawing.

Storage Buffer

50 mM Tris-HCl, 10 mM reduced Glutathione, pH=8.0 in the elution buffer.

GENE INFORMATION

Gene Name

[ATF2 activating transcription factor 2 \[Homo sapiens \]](#)

Official Symbol

[ATF2](#)

Synonyms

ATF2; activating transcription factor 2; cAMP responsive element binding protein 2 , CREB2; cyclic AMP-dependent transcription factor ATF-2; CRE BP1; HB16; TREB7; CREB-2; cAMP-dependent transcription factor ATF-2; cAMP-responsive element-binding protein 2; cAMP response element-binding protein CRE-BP1; cyclic AMP-responsive element-binding protein 2; cAMP responsive element binding protein 2, formerly; activating transcription factor 2 splice variant ATF2-var2; CREB2; CRE-BP1; MGC111558;

Gene ID

[1386](#)

mRNA Refseq

[NM_001256090](#)

Protein Refseq

[NP_001243019](#)

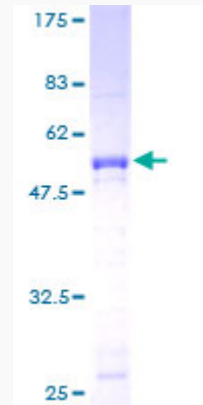
 Tel: 1-631-559-9269 1-516-512-3133

 Email: info@creative-biomart.com  Fax: 1-631-938-8127

 45-1 Ramsey Road, Shirley, NY 11967, USA

MIM 123811

UniProt ID P15336



12.5% SDS-PAGE Stained with Coomassie Blue.

Tel: 1-631-559-9269 1-516-512-3133

Email: info@creative-biomart.com Fax: 1-631-938-8127

45-1 Ramsey Road, Shirley, NY 11967, USA