

Recombinant Human ATF3 protein, GST-tagged

Cat. No. ATF3-938H **Lot. No.** (See product label)

SPECIFICATION

Product Overview	Human ATF3 full-length ORF (AAH06322, 1 a.a. - 181 a.a.) recombinant protein with GST-tag at N-terminal.
Species	Human
Source	Wheat Germ
Description	This gene encodes a member of the mammalian activation transcription factor/cAMP responsive element-binding (CREB) protein family of transcription factors. This gene is induced by a variety of signals, including many of those encountered by cancer cells, and is involved in the complex process of cellular stress response. Multiple transcript variants encoding different isoforms have been found for this gene. It is possible that alternative splicing of this gene may be physiologically important in the regulation of target genes. [provided by RefSeq, Apr 2011]
Molecular Mass	45.65 kDa
AA Sequence	MMLQHPGQVSASEVSASAIVPCLSPPGSLVFEDFANLTPFVKEELRFAIQNKHLCHR MSSALESVTVSDRPLGVSITKAEVAPEEDERKKRRRERNKIAAAKCRNKKKEKTECL QKESEKLESVNAELKAQIEELKNEKQHLYMLNLHRPTCIVRAQNGRTPEDERNLFIQ QIKEGTLQS
Applications	Enzyme-linked Immunoabsorbent Assay; Western Blot (Recombinant protein); Antibody Production; Protein Array

 Tel: 1-631-559-9269 1-516-512-3133

 Email: info@creative-biomart.com  Fax: 1-631-938-8127

 45-1 Ramsey Road, Shirley, NY 11967, USA

Notes	Best use within three months from the date of receipt of this protein.
Storage	Store at -80 centigrade. Aliquot to avoid repeated freezing and thawing.
Storage Buffer	50 mM Tris-HCl, 10 mM reduced Glutathione, pH=8.0 in the elution buffer.

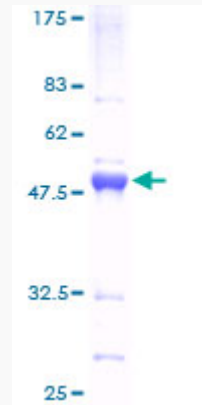
GENE INFORMATION

Gene Name	ATF3 activating transcription factor 3 [Homo sapiens]
Official Symbol	ATF3
Synonyms	ATF3; activating transcription factor 3; cyclic AMP-dependent transcription factor ATF-3; cAMP-dependent transcription factor ATF-3; FLJ41705;
Gene ID	467
mRNA Refseq	NM_001030287
Protein Refseq	NP_001025458
MIM	603148
UniProt ID	P18847

 Tel: 1-631-559-9269 1-516-512-3133

 Email: info@creative-biomart.com  Fax: 1-631-938-8127

 45-1 Ramsey Road, Shirley, NY 11967, USA



12.5% SDS-PAGE Stained with Coomassie Blue.

 Tel: 1-631-559-9269 1-516-512-3133

 Email: info@creative-biomart.com  Fax: 1-631-938-8127

 45-1 Ramsey Road, Shirley, NY 11967, USA