

Recombinant Human ATF4 Protein (Met1-Pro351), N-His-tagged

Cat. No. ATF4-0291H Lot. No. (See product label)

SPECIFICATION

Product Overview	Recombinant human ATF4 (Met1-Pro351) was fused with the N-His tag and was expressed in E. coli.
Species	Human
Source	E.coli
ProteinLength	Met1-Pro351
Form	Lyophilized powder/frozen liquid
Molecular Mass	40.90 kDa
Purity	>90% as determined by SDS-PAGE
Notes	For research use only.
Storage	Use a manual defrost freezer and avoid repeated freeze thaw cycles. Store at 2 to 8 centigrade for one week. Store at -20 to -80 centigrade for twelve months from the date of receipt.
Storage Buffer	0.01M PBS, pH 7.4, 0.02% NLS
Reconstitution	Reconstitute in sterile water for a stock solution.

 Tel: 1-631-559-9269 1-516-512-3133

 Email: info@creative-biomart.com  Fax: 1-631-938-8127

 45-1 Ramsey Road, Shirley, NY 11967, USA

Shipping They are shipped out with dry ice/blue ice unless customers require otherwise.

GENE INFORMATION

Gene Name	ATF4 activating transcription factor 4 (tax-responsive enhancer element B67) [Homo sapiens (human)]
Official Symbol	ATF4
Synonyms	ATF4; activating transcription factor 4 (tax-responsive enhancer element B67); TXREB; cyclic AMP-dependent transcription factor ATF-4; CREB 2; TAXREB67; DNA-binding protein TAXREB67; cAMP response element-binding protein 2; cAMP-dependent transcription factor ATF-4; cAMP-responsive element-binding protein 2; cyclic AMP-responsive element-binding protein 2; tax-responsive enhancer element-binding protein 67; CREB2; CREB-2;
Gene ID	468
mRNA Refseq	NM_001675
Protein Refseq	NP_001666
MIM	604064
UniProt ID	P18848

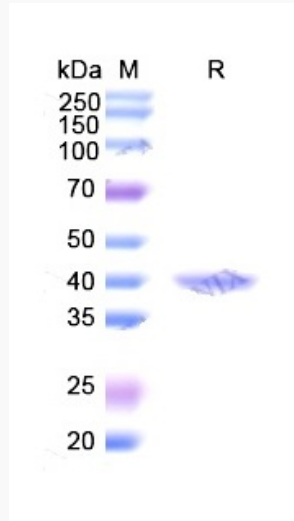
 Tel: 1-631-559-9269 1-516-512-3133

 Email: info@creative-biomart.com  Fax: 1-631-938-8127

 45-1 Ramsey Road, Shirley, NY 11967, USA



SDS-PAGE



Tel: 1-631-559-9269 1-516-512-3133

Email: info@creative-biomart.com Fax: 1-631-938-8127

45-1 Ramsey Road, Shirley, NY 11967, USA