

Recombinant Full Length Human ATF4 Protein, N-His-tagged

Cat. No. ATF4-217HFL Lot. No. (See product label)

SPECIFICATION

Product Overview	Recombinant Full Length Human ATF4 Protein, fused to His-tag at N-terminus, was expressed in E. coli.
Species	Human
Source	E.coli
Description	<p>This gene encodes a transcription factor that was originally identified as a widely expressed mammalian DNA binding protein that could bind a tax-responsive enhancer element in the LTR of HTLV-1. The encoded protein was also isolated and characterized as the cAMP-response element binding protein 2 (CREB-2). The protein encoded by this gene belongs to a family of DNA-binding proteins that includes the AP-1 family of transcription factors, cAMP-response element binding proteins (CREBs) and CREB-like proteins. These transcription factors share a leucine zipper region that is involved in protein-protein interactions, located C-terminal to a stretch of basic amino acids that functions as a DNA binding domain. Two alternative transcripts encoding the same protein have been described. Two pseudogenes are located on the X chromosome at q28 in a region containing a large inverted duplication.</p>
Form	25mM Tris, pH8.0, 150 mM NaCl, 10% glycerol, 1% Sarkosyl.
Molecular Mass	38.4 kDa
AA Sequence	A DNA sequence encoding human full-length ATF4.

 Tel: 1-631-559-9269 1-516-512-3133

 Email: info@creative-biomart.com  Fax: 1-631-938-8127

 45-1 Ramsey Road, Shirley, NY 11967, USA

Purity	> 80% as determined by SDS-PAGE and Coomassie blue staining.
Stability	Stable for 12 months from the date of receipt of the product under proper storage and handling conditions. Avoid repeated freeze-thaw cycles.
Storage	Store at -80 centigrade.
Concentration	>50 ug/mL as determined by microplate BCA method.
Protein Families	Transcription Factors
Protein Pathways	GnRH signaling pathway, Long-term potentiation, MAPK signaling pathway, Neurotrophin signaling pathway, Prostate cancer
Full Length	Full L.

GENE INFORMATION

Gene Name	ATF4 activating transcription factor 4 [Homo sapiens (human)]
Official Symbol	ATF4
Synonyms	CREB2; TXREB; CREB-2; TAXREB67
Gene ID	468
mRNA Refseq	NM_001675.4
Protein Refseq	NP_001666.2
MIM	604064

 Tel: 1-631-559-9269 1-516-512-3133

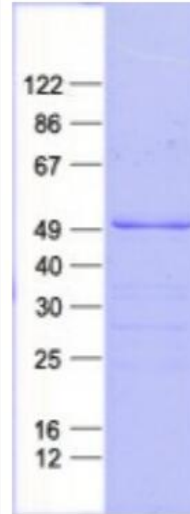
 Email: info@creative-biomart.com  Fax: 1-631-938-8127

 45-1 Ramsey Road, Shirley, NY 11967, USA

UniProt ID

P18848

SDS-PAGE



 Tel: 1-631-559-9269 1-516-512-3133

 Email: info@creative-biomart.com  Fax: 1-631-938-8127

 45-1 Ramsey Road, Shirley, NY 11967, USA