

## Recombinant Human ATF4 protein, His-tagged

Cat. No. ATF4-7943H Lot. No. (See product label)

### SPECIFICATION

<b>Product Overview</b>	Recombinant Human ATF4 protein(206-351 aa), fused with N-terminal His tag, was expressed in E. coli.
<b>Species</b>	Human
<b>Source</b>	E.coli
<b>ProteinLength</b>	206-351 aa
<b>Form</b>	The purified protein was Lyophilized from sterile PBS (58mM Na <sub>2</sub> HPO <sub>4</sub> , 17mM NaH <sub>2</sub> PO <sub>4</sub> , 68mM NaCl, pH7.4). 5 % trehalose and 5 % mannitol are added as protectant before lyophilization. The elution buffer contain 300mM imidazole.
<b>Storage</b>	Short-term storage: Store at 2-8°C for (1-2 weeks). Long-term storage: Aliquot and store at -20°C to -80°C for up to 3 months, reconstitution with sterile water and addition of an equal volume of glycerol. Avoid repeat freeze-thaw cycles.
<b>Purity</b>	85%, by SDS-PAGE with Coomassie Brilliant Blue staining.

### GENE INFORMATION

<b>Official Symbol</b>	<a href="#">ATF4</a>
<b>Synonyms</b>	ATF4; activating transcription factor 4 (tax-responsive enhancer element B67); TXREB; cyclic AMP-dependent transcription factor ATF-4; CREB 2; TAXREB67;

 Tel: 1-631-559-9269 1-516-512-3133

 Email: [info@creative-biomart.com](mailto:info@creative-biomart.com)  Fax: 1-631-938-8127

 45-1 Ramsey Road, Shirley, NY 11967, USA

DNA-binding protein TAXREB67; cAMP response element-binding protein 2; cAMP-dependent transcription factor ATF-4; cAMP-responsive element-binding protein 2; cyclic AMP-responsive element-binding protein 2; tax-responsive enhancer element-binding protein 67; CREB2; CREB-2;

**Gene ID** 468

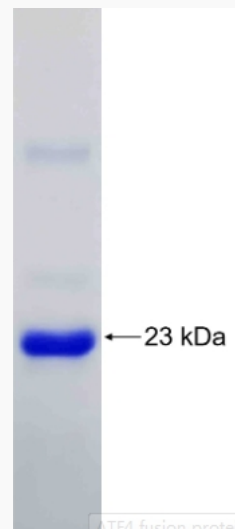
**mRNA Refseq** NM\_001675


**Protein Refseq** NP\_001666

**MIM** 604064


**UniProt ID** P18848

**SDS-PAGE**



 Tel: 1-631-559-9269 1-516-512-3133

 Email: [info@creative-biomart.com](mailto:info@creative-biomart.com)  Fax: 1-631-938-8127

 45-1 Ramsey Road, Shirley, NY 11967, USA