

## Recombinant Human ATF6 Protein (Met1-Thr192), N-His-tagged

Cat. No. ATF6-0152H    Lot. No. (See product label)

### SPECIFICATION

<b>Product Overview</b>	Recombinant human ATF6 (Met1-Thr192) was fused with the N-His tag and was expressed in E. coli.
<b>Species</b>	Human
<b>Source</b>	E.coli
<b>ProteinLength</b>	Met1-Thr192
<b>Form</b>	Lyophilized powder/frozen liquid
<b>Molecular Mass</b>	23.39 kDa
<b>Purity</b>	>90% as determined by SDS-PAGE
<b>Notes</b>	For research use only.
<b>Storage</b>	Use a manual defrost freezer and avoid repeated freeze thaw cycles. Store at 2 to 8 centigrade for one week. Store at -20 to -80 centigrade for twelve months from the date of receipt.
<b>Storage Buffer</b>	0.01M PBS, pH 7.4, 0.02% NLS
<b>Reconstitution</b>	Reconstitute in sterile water for a stock solution.

 Tel: 1-631-559-9269    1-516-512-3133

 Email: [info@creative-biomart.com](mailto:info@creative-biomart.com)     Fax: 1-631-938-8127

 45-1 Ramsey Road, Shirley, NY 11967, USA

**Shipping** They are shipped out with dry ice/blue ice unless customers require otherwise.

## GENE INFORMATION

**Gene Name** ATF6 activating transcription factor 6 [ Homo sapiens (human) ]

**Official Symbol** ATF6

**Synonyms** ATF6; activating transcription factor 6; cyclic AMP-dependent transcription factor ATF-6 alpha; activating transcription factor 6 alpha; ATF6A; cAMP-dependent transcription factor ATF-6 alpha; FLJ21663; DKFZp686P2194;

**Gene ID** 22926

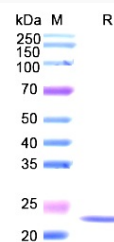
**mRNA Refseq** NM\_007348

**Protein Refseq** NP\_031374

**MIM** 605537

**UniProt ID** P18850

## SDS-PAGE



Tel: 1-631-559-9269 1-516-512-3133

Email: [info@creative-biomart.com](mailto:info@creative-biomart.com) Fax: 1-631-938-8127

45-1 Ramsey Road, Shirley, NY 11967, USA