

# Recombinant Human activating transcription factor 6 Protein, Tag Free

Cat. No. ATF6-191H Lot. No. (See product label)

## SPECIFICATION

### Product Overview

Recombinant human ATF6 protein (P18850) (Glu 12-Val 292) without tag was expressed in HEK293.

### Species

Human

### Source

HEK293

### ProteinLength

12-292aa

### Description

This gene encodes a transcription factor that activates target genes for the unfolded protein response (UPR) during endoplasmic reticulum (ER) stress. Although it is a transcription factor, this protein is unusual in that it is synthesized as a transmembrane protein that is embedded in the ER. It functions as an ER stress sensor/transducer, and following ER stress-induced proteolysis, it functions as a nuclear transcription factor via a cis-acting ER stress response element (ERSE) that is present in the promoters of genes encoding ER chaperones. This protein has been identified as a survival factor for quiescent but not proliferative squamous carcinoma cells. There have been conflicting reports about the association of polymorphisms in this gene with diabetes in different populations, but another polymorphism has been associated with increased plasma cholesterol levels. This gene is also thought to be a potential therapeutic target for cystic fibrosis. Precursor of the transcription factor form (Processed cyclic AMP-dependent transcription factor ATF-6 alpha), which is embedded in the endoplasmic reticulum membrane. Endoplasmic reticulum stress

 Tel: 1-631-559-9269 1-516-512-3133

 Email: [info@creative-biomart.com](mailto:info@creative-biomart.com)  Fax: 1-631-938-8127

 45-1 Ramsey Road, Shirley, NY 11967, USA

promotes processing of this form, releasing the transcription factor form that translocates into the nucleus, where it activates transcription of genes involved in the unfolded protein response (UPR).

**Tag** Non

**Molecular Mass** 30.6 kDa

**Endotoxin** Less than 1.0 EU/μg by the LAL method.

**Purity** >95% as determined by SDS-PAGE.

**Storage** Please avoid repeated freeze-thaw cycles. Samples are stable for up to twelve months from date of receipt at -20 to -80 centigrade. It is recommended that aliquot the reconstituted solution to minimize freeze-thaw cycles.

**Storage Buffer** Lyophilized from a 0.2 μm filtered solution of PBS, pH7.4, 5% Trehalose, 5% mannitol.

**Reconstitution** Reconstitute at 250 μg/mL in sterile water.

## GENE INFORMATION

**Gene Name** ATF6 activating transcription factor 6 [ Homo sapiens (human) ]

**Official Symbol** ATF6

**Synonyms** ATF6; activating transcription factor 6; cyclic AMP-dependent transcription factor ATF-6 alpha; activating transcription factor 6 alpha; ATF6A; cAMP-dependent transcription factor ATF-6 alpha; FLJ21663; DKFZp686P2194;

 Tel: 1-631-559-9269 1-516-512-3133

 Email: [info@creative-biomart.com](mailto:info@creative-biomart.com)  Fax: 1-631-938-8127

 45-1 Ramsey Road, Shirley, NY 11967, USA

Gene ID 22926

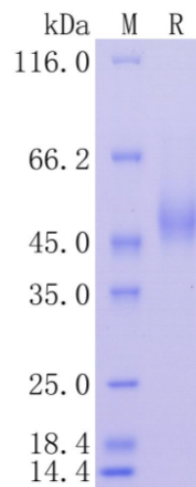
mRNA Refseq NM\_007348

Protein Refseq NP\_031374

MIM 605537

UniProt ID P18850

Protein on SDS-PAGE under reducing (R) condition.



Tel: 1-631-559-9269 1-516-512-3133

Email: [info@creative-biomart.com](mailto:info@creative-biomart.com) Fax: 1-631-938-8127

45-1 Ramsey Road, Shirley, NY 11967, USA