

Recombinant Human ATG10 Protein (Met1-Thr190), N-T7 and C-His-tagged

Cat. No. ATG10-0458H Lot. No. (See product label)

SPECIFICATION

Product Overview	Recombinant human ATG10 (Met1-Thr190) was fused with the N-terminal T7 tag, C-terminal His tag and was expressed in E. coli.
Species	Human
Source	E.coli
ProteinLength	Met1-Thr190
Form	Lyophilized powder/frozen liquid
Molecular Mass	20.9 kDa
Purity	>90% as determined by SDS-PAGE
Notes	For research use only.
Storage	Use a manual defrost freezer and avoid repeated freeze thaw cycles. Store at 2 to 8 centigrade for one week. Store at -20 to -80 centigrade for twelve months from the date of receipt.
Storage Buffer	Supplied as solution form in PBS or lyophilized from PBS.
Reconstitution	Reconstitute in sterile water for a stock solution.

 Tel: 1-631-559-9269 1-516-512-3133

 Email: info@creative-biomart.com  Fax: 1-631-938-8127

 45-1 Ramsey Road, Shirley, NY 11967, USA

Shipping They are shipped out with dry ice/blue ice unless customers require otherwise.

GENE INFORMATION

Gene Name ATG10 ATG10 autophagy related 10 homolog (*S. cerevisiae*) [*Homo sapiens* (human)]

Official Symbol ATG10

Synonyms ATG10; ATG10 autophagy related 10 homolog (*S. cerevisiae*); APG10 autophagy 10 like (*S. cerevisiae*), APG10L; ubiquitin-like-conjugating enzyme ATG10; DKFZP586I0418; FLJ13954; autophagy-related protein 10; APG10; APG10L; pp12616; DKFZp586I0418;

Gene ID 83734

mRNA Refseq NM_001131028

Protein Refseq NP_001124500

MIM 610800

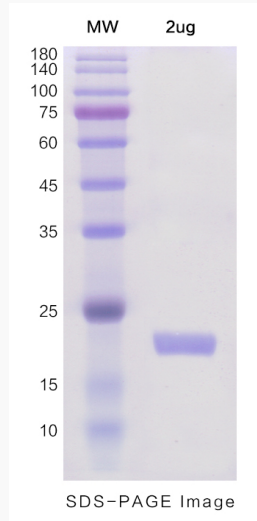
UniProt ID Q9H0Y0

 Tel: 1-631-559-9269 1-516-512-3133

 Email: info@creative-biomart.com  Fax: 1-631-938-8127

 45-1 Ramsey Road, Shirley, NY 11967, USA

SDS-PAGE



 Tel: 1-631-559-9269 1-516-512-3133

 Email: info@creative-biomart.com  Fax: 1-631-938-8127

 45-1 Ramsey Road, Shirley, NY 11967, USA