

Recombinant Human ATG10 protein, GST-tagged

Cat. No. ATG10-942H **Lot. No.** (See product label)

SPECIFICATION

Product Overview	Human ATG10 full-length ORF (NP_113670.1, 1 a.a. - 220 a.a.) recombinant protein with GST-tag at N-terminal.
Species	Human
Source	Wheat Germ
Description	Autophagy is a process for the bulk degradation of cytosolic compartments by lysosomes. ATG10 is an E2-like enzyme involved in 2 ubiquitin-like modifications essential for autophagosome formation: ATG12 (MIM 609608)-ATG5 (MIM 604261) conjugation and modification of a soluble form of MAP-LC3 (MAP1LC3A; MIM 601242), a homolog of yeast Apg8, to a membrane-bound form (Nemoto et al., 2003 [PubMed 12890687]).[supplied by OMIM, Mar 2008]
Molecular Mass	51.7 kDa
AA Sequence	MEDEFI G E K T F Q R Y C A E F I K H S Q Q I G D S W E W R P S K D C S D G Y M C K I H F Q I K N G S V M S H L G A S T H G Q T C L P M E E A F E L P L D D C E V I E T A A A S E V I K Y E Y H V L Y S C S Y Q V P V L Y F R A S F L D G R P L T L K D I W E G V H E C Y K M R L L Q G P W D T I T Q Q E H P I L G Q P F F V L H P C K T N E F M T P V L K N S Q K I N K N V N Y I T S W L S I V G P V V G L N L P L S Y A K A T S Q D E R N V P
Applications	Enzyme-linked Immunoabsorbent Assay; Western Blot (Recombinant protein); Antibody Production; Protein Array
Notes	Best use within three months from the date of receipt of this protein.

 Tel: 1-631-559-9269 1-516-512-3133

 Email: info@creative-biomart.com  Fax: 1-631-938-8127

 45-1 Ramsey Road, Shirley, NY 11967, USA

Storage Store at -80 centigrade. Aliquot to avoid repeated freezing and thawing.

Storage Buffer 50 mM Tris-HCl, 10 mM reduced Glutathione, pH=8.0 in the elution buffer.

GENE INFORMATION

Gene Name [ATG10](#) [ATG10 autophagy related 10 homolog \(S. cerevisiae\)](#) [[Homo sapiens](#)]

Official Symbol [ATG10](#)

Synonyms [ATG10](#); [ATG10 autophagy related 10 homolog \(S. cerevisiae\)](#); [APG10 autophagy 10 like \(S. cerevisiae\)](#) , [APG10L](#); [ubiquitin-like-conjugating enzyme ATG10](#); [DKFZP586I0418](#); [FLJ13954](#); [autophagy-related protein 10](#); [APG10](#); [APG10L](#); [pp12616](#); [DKFZp586I0418](#);

Gene ID [83734](#)

mRNA Refseq [NM_001131028](#)

Protein Refseq [NP_001124500](#)

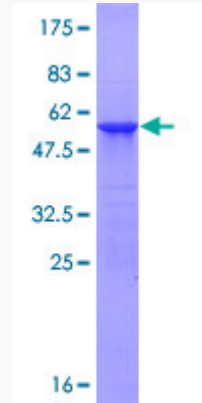
MIM [610800](#)

UniProt ID [Q9H0Y0](#)

 Tel: 1-631-559-9269 1-516-512-3133

 Email: info@creative-biomart.com  Fax: 1-631-938-8127

 45-1 Ramsey Road, Shirley, NY 11967, USA



12.5% SDS-PAGE Stained with Coomassie Blue.

 Tel: 1-631-559-9269 1-516-512-3133

 Email: info@creative-biomart.com  Fax: 1-631-938-8127

 45-1 Ramsey Road, Shirley, NY 11967, USA