

Recombinant Human ATG16L1 Protein (Met85-Gly284), N-GST-tagged

Cat. No. ATG16L1-0385H Lot. No. (See product label)

SPECIFICATION

Product Overview	Recombinant human ATG16L1 (Met85-Gly284) was fused with the N-GST tag and was expressed in E. coli.
Species	Human
Source	E.coli
ProteinLength	Met85-Gly284
Form	Lyophilized powder/frozen liquid
Molecular Mass	49.81 kDa
Purity	>90% as determined by SDS-PAGE
Notes	For research use only.
Storage	Use a manual defrost freezer and avoid repeated freeze thaw cycles. Store at 2 to 8 centigrade for one week. Store at -20 to -80 centigrade for twelve months from the date of receipt.
Storage Buffer	0.01M PBS, pH 7.4, 0.02% NLS
Reconstitution	Reconstitute in sterile water for a stock solution.

 Tel: 1-631-559-9269 1-516-512-3133

 Email: info@creative-biomart.com  Fax: 1-631-938-8127

 45-1 Ramsey Road, Shirley, NY 11967, USA

Shipping

They are shipped out with dry ice/blue ice unless customers require otherwise.

GENE INFORMATION

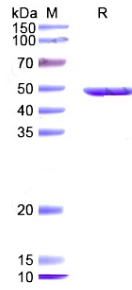
Gene Name	ATG16L1 ATG16 autophagy related 16-like 1 (S. cerevisiae) [Homo sapiens (human)]
Official Symbol	ATG16L1
Synonyms	ATG16L1; ATG16 autophagy related 16-like 1 (S. cerevisiae); APG16 autophagy 16 like (S. cerevisiae), APG16L, ATG16 autophagy related 16 like (S. cerevisiae), ATG16L; autophagy-related protein 16-1; ATG16A; FLJ10035; WDR30; APG16L beta; WD repeat domain 30; IBD10; APG16L; ATG16L; FLJ00045; FLJ10828; FLJ22677;
Gene ID	55054
mRNA Refseq	NM_001190266
Protein Refseq	NP_001177195
MIM	610767
UniProt ID	Q676U5

 Tel: 1-631-559-9269 1-516-512-3133

 Email: info@creative-biomart.com  Fax: 1-631-938-8127

 45-1 Ramsey Road, Shirley, NY 11967, USA

SDS-PAGE



 Tel: 1-631-559-9269 1-516-512-3133

 Email: info@creative-biomart.com  Fax: 1-631-938-8127

 45-1 Ramsey Road, Shirley, NY 11967, USA