

Recombinant Human ATG16L1 Protein, His-tagged

Cat. No. ATG16L1-259H Lot. No. (See product label)

SPECIFICATION

Product Overview	Recombinant Human ATG16L1 Protein (Met1-Tyr607) with N-His tag was expressed in E. coli.
Species	Human
Source	E.coli
ProteinLength	Met1-Tyr607
Description	The protein encoded by this gene is part of a large protein complex that is necessary for autophagy, the major process by which intracellular components are targeted to lysosomes for degradation. Defects in this gene are a cause of susceptibility to inflammatory bowel disease type 10 (IBD10). Several transcript variants encoding different isoforms have been found for this gene.
Form	Freeze-dried powder
Molecular Mass	Predicted Molecular Mass: 71.7 kDa Accurate Molecular Mass: 70 kDa
Purity	> 90%
Applications	Positive Control; Immunogen; SDS-PAGE; WB.
Stability	The thermal stability is described by the loss rate. The loss rate was determined by

 Tel: 1-631-559-9269 1-516-512-3133

 Email: info@creative-biomart.com  Fax: 1-631-938-8127

 45-1 Ramsey Road, Shirley, NY 11967, USA

accelerated thermal degradation test, that is, incubate the protein at 37 centigrade for 48h, and no obvious degradation and precipitation were observed. The loss rate is less than 5% within the expiration date under appropriate storage condition.

Storage

Avoid repeated freeze/thaw cycles. Store at 2-8 centigrade for one month. Aliquot and store at -80 centigrade for 12 months.

Storage Buffer

20mM Tris, 150mM NaCl, pH8.0, containing 1mM EDTA, 1mM DTT, 0.01% SKL, 5% Trehalose and Proclin300.

Reconstitution

Reconstitute in sterile water to a concentration of 0.1-1.0 mg/mL. Do not vortex.

GENE INFORMATION

Gene Name

ATG16L1 ATG16 autophagy related 16-like 1 (*S. cerevisiae*) [*Homo sapiens* (human)]

Official Symbol

ATG16L1

Synonyms

ATG16L1; ATG16 autophagy related 16-like 1 (*S. cerevisiae*); APG16 autophagy 16 like (*S. cerevisiae*), APG16L, ATG16 autophagy related 16 like (*S. cerevisiae*), ATG16L; autophagy-related protein 16-1; ATG16A; FLJ10035; WDR30; APG16L beta; WD repeat domain 30; IBD10; APG16L; ATG16L; FLJ00045; FLJ10828; FLJ22677

Gene ID

55054

mRNA Refseq

NM_001190266

Protein Refseq

NP_001177195

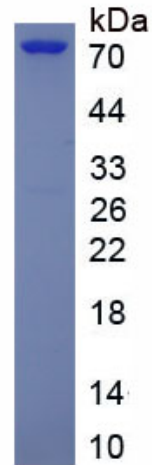
 Tel: 1-631-559-9269 1-516-512-3133

 Email: info@creative-biomart.com  Fax: 1-631-938-8127

 45-1 Ramsey Road, Shirley, NY 11967, USA

MIM 610767

UniProt ID Q676U5



 Tel: 1-631-559-9269 1-516-512-3133

 Email: info@creative-biomart.com  Fax: 1-631-938-8127

 45-1 Ramsey Road, Shirley, NY 11967, USA