

Recombinant Human ATG16L1 protein, GST-tagged

Cat. No. ATG16L1-945H Lot. No. (See product label)

SPECIFICATION

Product Overview Human ATG16L1 full-length ORF (NP_110430.4, 1 a.a. - 523 a.a.) recombinant protein with GST-tag at N-terminal.

Species Human

Source Wheat Germ

Description The protein encoded by this gene is part of a large protein complex that is necessary for autophagy, the major process by which intracellular components are targeted to lysosomes for degradation. Defects in this gene are a cause of susceptibility to inflammatory bowel disease type 10 (IBD10). Several transcript variants encoding different isoforms have been found for this gene.[provided by RefSeq, Jun 2010]

Molecular Mass 84.7 kDa

AA Sequence

```

MAQLRIKHQEELTELHKKRGELAQLVIDLNNQMQRKDREMQMNEAKIAECLQTISDL
ETECLDLRCLKDLERANQTLKDEYDALQITFTALEGKLRKTTEENQELVTRWMAEK
AQEANRLNAENKDSRRRQARLQKELAEAAKEPLPVEQDDIEVIVDETSDHTEETS
PVRAISRAATKRLSQPAGGLLDSITNIFGRRSVSSFPVPQDNVDTHPGSGKEVRVPA
TALCVFDAHDGEVNAVQFSPGSRLLATGGMDRRVKLWEVFGKCEFKGSLSGSNA
GITSIEFDSAGSYLLAASNDFASRIWTVDDYRLRHTLTGHSGKVLSAKFLLDNARIVS
GSHDRTLKLWDLRSKVICIKTVFAGSSCNDIVCTEQCVMSGHFDKIRFWDIRSESIV
REMELLGKITALDLNPERTELLSCSRD DLLKVIDLRTNAIKQTF SAPGFKCGSDWTRV
VFSPDGSYVAAGSAEGSLYIWSVLTGKVEKVLSKQHSSSINAVAWSPSGSHVVSVD
    
```

 Tel: 1-631-559-9269 1-516-512-3133

 Email: info@creative-biomart.com  Fax: 1-631-938-8127

 45-1 Ramsey Road, Shirley, NY 11967, USA

KGCKAVLWAQY

Applications

Enzyme-linked Immunoabsorbent Assay; Western Blot (Recombinant protein); Antibody Production; Protein Array

Notes

Best use within three months from the date of receipt of this protein.

Storage

Store at -80 centigrade. Aliquot to avoid repeated freezing and thawing.

Storage Buffer

50 mM Tris-HCl, 10 mM reduced Glutathione, pH=8.0 in the elution buffer.

GENE INFORMATION

Gene Name

[ATG16L1 ATG16 autophagy related 16-like 1 \(S. cerevisiae\) \[Homo sapiens \]](#)

Official Symbol

[ATG16L1](#)

Synonyms

ATG16L1; ATG16 autophagy related 16-like 1 (S. cerevisiae); APG16 autophagy 16 like (S. cerevisiae) , APG16L, ATG16 autophagy related 16 like (S. cerevisiae) , ATG16L; autophagy-related protein 16-1; ATG16A; FLJ10035; WDR30; APG16L beta; WD repeat domain 30; IBD10; APG16L; ATG16L; FLJ00045; FLJ10828; FLJ22677;

Gene ID

[55054](#)

mRNA Refseq

[NM_001190266](#)

Protein Refseq

[NP_001177195](#)

MIM

[610767](#)

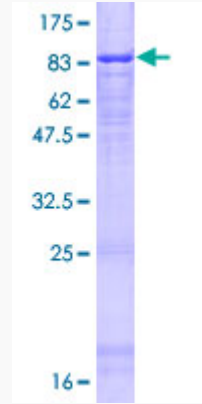
 Tel: 1-631-559-9269 1-516-512-3133

 Email: info@creative-biomart.com  Fax: 1-631-938-8127

 45-1 Ramsey Road, Shirley, NY 11967, USA

UniProt ID

Q676U5



12.5% SDS-PAGE Stained with Coomassie Blue.

 Tel: 1-631-559-9269 1-516-512-3133

 Email: info@creative-biomart.com  Fax: 1-631-938-8127

 45-1 Ramsey Road, Shirley, NY 11967, USA