

Recombinant Human ATG3 Protein (Met1-His287), N-T8 and C-His-tagged

Cat. No. ATG3-0069H **Lot. No.** (See product label)

SPECIFICATION

Product Overview	Recombinant human ATG3 (Met1-His287) was fused with the N-terminal T8 tag, C-terminal His tag and was expressed in E. coli.
Species	Human
Source	E.coli
ProteinLength	Met1-His287
Form	Lyophilized powder/frozen liquid
Molecular Mass	31.57 kDa
Purity	>90% as determined by SDS-PAGE
Notes	For research use only.
Storage	Use a manual defrost freezer and avoid repeated freeze thaw cycles. Store at 2 to 8 centigrade for one week. Store at -20 to -80 centigrade for twelve months from the date of receipt.
Storage Buffer	Supplied as solution form in PBS or lyophilized from PBS.
Reconstitution	Reconstitute in sterile water for a stock solution.

 Tel: 1-631-559-9269 1-516-512-3133

 Email: info@creative-biomart.com  Fax: 1-631-938-8127

 45-1 Ramsey Road, Shirley, NY 11967, USA

Shipping They are shipped out with dry ice/blue ice unless customers require otherwise.

GENE INFORMATION

Gene Name [ATG3](#) [ATG3 autophagy related 3 homolog \(S. cerevisiae\)](#) [[Homo sapiens \(human\)](#)]

Official Symbol [ATG3](#)

Synonyms [ATG3](#); [ATG3 autophagy related 3 homolog \(S. cerevisiae\)](#); [APG3 autophagy 3 like \(S. cerevisiae\)](#), [APG3L](#); [ubiquitin-like-conjugating enzyme ATG3](#); [DKFZp564M1178](#); [FLJ22125](#); [MGC15201](#); [PC3 96](#); [hApg3](#); [2610016C12Rik](#); [autophagy-related protein 3](#); [APG3](#); [APG3L](#); [PC3-96](#); [APG3-LIKE](#);

Gene ID [64422](#)

mRNA Refseq [NM_022488](#)

Protein Refseq [NP_071933](#)

MIM [609606](#)

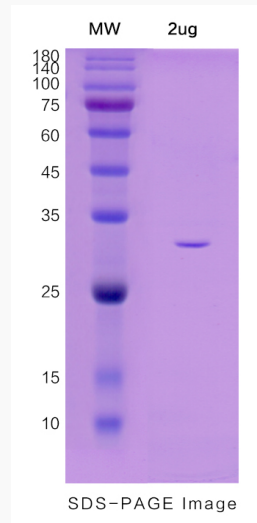
UniProt ID [Q9NT62](#)

 Tel: 1-631-559-9269 1-516-512-3133

 Email: info@creative-biomart.com  Fax: 1-631-938-8127

 45-1 Ramsey Road, Shirley, NY 11967, USA

SDS-PAGE



 Tel: 1-631-559-9269 1-516-512-3133

 Email: info@creative-biomart.com  Fax: 1-631-938-8127

 45-1 Ramsey Road, Shirley, NY 11967, USA