

Recombinant Human ATG4A protein, His-tagged

Cat. No. ATG4A-6522H **Lot. No.** (See product label)

SPECIFICATION

Product Overview	Recombinant Human ATG4A protein(Q8WYN0)(413aa), fused with N-terminal His tag, was expressed in E. coli.
Species	Human
Source	E.coli
Protein Length	413aa(including fusion tag)
Tag	N-His
Form	20mM Tris.Cl, 100mM NaCl, 0.4M Urea, 50% Glycerol, pH8.0.
Molecular Mass	47.3kDa(including fusion tag)
Storage	Store at -80°C and avoid repeated freeze-thaw cycles.
Reconstitution	It is recommended that sterile water be added to the vial to prepare a stock solution of 0.2 ug/ul. Centrifuge the vial at 4°C before opening to recover the entire contents.

GENE INFORMATION

Gene Name	ATG4A ATG4 autophagy related 4 homolog A (S. cerevisiae) [Homo sapiens]
Official Symbol	ATG4A

 Tel: 1-631-559-9269 1-516-512-3133

 Email: info@creative-biomart.com  Fax: 1-631-938-8127

 45-1 Ramsey Road, Shirley, NY 11967, USA

Synonyms ATG4A; ATG4 autophagy related 4 homolog A (*S. cerevisiae*); APG4 autophagy 4 homolog A (*S. cerevisiae*) , APG4A, AUT like 2, cysteine endopeptidase (*S. cerevisiae*) , AUTL2; cysteine protease ATG4A; hAPG4A; autophagin 2; autophagin-2; APG4 autophagy 4 homolog A; AUT-like 2 cysteine endopeptidase; AUT-like 2, cysteine endopeptidase; autophagy-related protein 4 homolog A; autophagy-related cysteine endopeptidase 2; APG4A; AUTL2;

Gene ID 115201

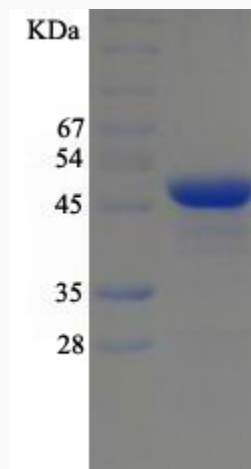
mRNA Refseq NM_052936

Protein Refseq NP_443168

MIM 300663

UniProt ID Q8WYN0

SDS-PAGE



 Tel: 1-631-559-9269 1-516-512-3133

 Email: info@creative-biomart.com  Fax: 1-631-938-8127

 45-1 Ramsey Road, Shirley, NY 11967, USA