

## Recombinant Human ATG4A protein, GST-tagged

Cat. No. ATG4A-948H Lot. No. (See product label)

### SPECIFICATION

**Product Overview** Human ATG4A full-length ORF ( NP\_443168.2, 1 a.a. - 398 a.a.) recombinant protein with GST-tag at N-terminal.

**Species** Human

**Source** Wheat Germ

**Description** Autophagy is the process by which endogenous proteins and damaged organelles are destroyed intracellularly. Autophagy is postulated to be essential for cell homeostasis and cell remodeling during differentiation, metamorphosis, non-apoptotic cell death, and aging. Reduced levels of autophagy have been described in some malignant tumors, and a role for autophagy in controlling the unregulated cell growth linked to cancer has been proposed. This gene encodes a member of the autophagin protein family. The encoded protein is also designated as a member of the C-54 family of cysteine proteases. [provided by RefSeq, Mar 2016]

**Molecular Mass** 71.8 kDa

**AA Sequence** MESVLSKYEDQITIFTDYLEEYPTDELVWILGKQHLLKTEKSKLLSDISARLWFTYRR  
 KFSPIGGTGPSSDAGWGCMLRCGQMMLAQALICRHLGRDWSWEKQKEQPKEYQR  
 ILQCFLDRKCCYSIHQMAQMGVGEKSGIGEWFGPNTVAQVLKLLALFDEWNSLAV  
 YVSMDNNTVIEDIKKMCRLVPLSADTAGDRPPDSLASNQSKGTSAYCSAWKPLLLI  
 VPLRLGINQINPVYVDAFKECFKMPQSLGALGGKPNNAYYFIGFLGDELIFLDPHTTQ  
 TFVDTEENGTVNDQTFHCLQSPQRMNILNLDPSVALGFFCCKEEKDFDNWCSLVQKE

 Tel: 1-631-559-9269 1-516-512-3133

 Email: [info@creative-biomart.com](mailto:info@creative-biomart.com)  Fax: 1-631-938-8127

 45-1 Ramsey Road, Shirley, NY 11967, USA

ILKENLRMFELVQKHP SHWPPFVPPAKPEVTTTGAEFIDSTEQLLEFDLEEDFEILSV

**Applications**

Enzyme-linked Immunoabsorbent Assay; Western Blot (Recombinant protein); Antibody Production; Protein Array

**Notes**

Best use within three months from the date of receipt of this protein.

**Storage**

Store at -80 centigrade. Aliquot to avoid repeated freezing and thawing.

**Storage Buffer**

50 mM Tris-HCl, 10 mM reduced Glutathione, pH=8.0 in the elution buffer.

## GENE INFORMATION

**Gene Name**

ATG4A ATG4 autophagy related 4 homolog A (*S. cerevisiae*) [ *Homo sapiens* ]

**Official Symbol**

ATG4A

**Synonyms**

ATG4A; ATG4 autophagy related 4 homolog A (*S. cerevisiae*); APG4 autophagy 4 homolog A (*S. cerevisiae*) , APG4A, AUT like 2, cysteine endopeptidase (*S. cerevisiae*) , AUTL2; cysteine protease ATG4A; hAPG4A; autophagin 2; autophagin-2; APG4 autophagy 4 homolog A; AUT-like 2 cysteine endopeptidase; AUT-like 2, cysteine endopeptidase; autophagy-related protein 4 homolog A; autophagy-related cysteine endopeptidase 2; APG4A; AUTL2;

**Gene ID**

115201

**mRNA Refseq**

NM\_052936

**Protein Refseq**

NP\_443168

**MIM**

300663

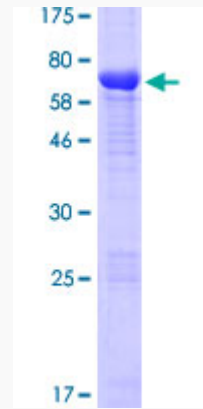
 Tel: 1-631-559-9269 1-516-512-3133

 Email: [info@creative-biomart.com](mailto:info@creative-biomart.com)  Fax: 1-631-938-8127

 45-1 Ramsey Road, Shirley, NY 11967, USA

UniProt ID

Q8WYN0



12.5% SDS-PAGE Stained with Coomassie Blue.

 Tel: 1-631-559-9269 1-516-512-3133

 Email: [info@creative-biomart.com](mailto:info@creative-biomart.com)  Fax: 1-631-938-8127

 45-1 Ramsey Road, Shirley, NY 11967, USA