

Recombinant Human ATG4B Protein, His-tagged

Cat. No. ATG4B-108H Lot. No. (See product label)

SPECIFICATION

| | |
|-------------------------|--|
| Product Overview | Recombinant N-terminal histidine-tagged human ATG4B protein (2-393) was expressed in E. coli. |
| Species | Human |
| Source | E.coli |
| ProteinLength | 2-393 |
| Description | <p>Autophagy is the process by which endogenous proteins and damaged organelles are destroyed intracellularly. Autophagy is postulated to be essential for cell homeostasis and cell remodeling during differentiation, metamorphosis, non-apoptotic cell death, and aging. Reduced levels of autophagy have been described in some malignant tumors, and a role for autophagy in controlling the unregulated cell growth linked to cancer has been proposed. This gene encodes a member of the autophagin protein family. The encoded protein is also designated as a member of the C-54 family of cysteine proteases. Alternate transcriptional splice variants, encoding different isoforms, have been characterized.</p> |
| Molecular Mass | 43.4 kDa |
| Purity | ≥80% as determined by SDS-PAGE |
| Stability | ≥ 1 year |

 Tel: 1-631-559-9269 1-516-512-3133

 Email: info@creative-biomart.com  Fax: 1-631-938-8127

 45-1 Ramsey Road, Shirley, NY 11967, USA

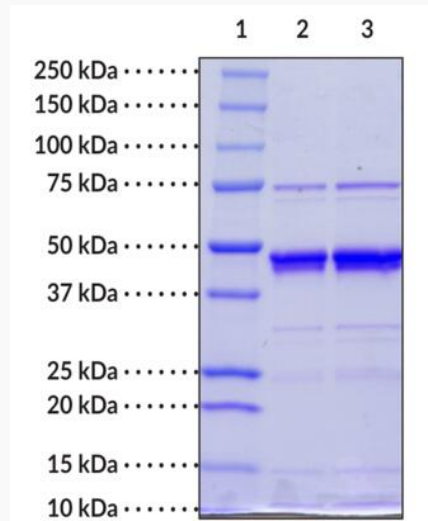
| | |
|-------------------------|---|
| Storage | At -80 centigrade. |
| Storage Buffer | 50 mM HEPES, pH 8.0, 150 mM sodium chloride, 10% glycerol |
| GENE INFORMATION | |
| Gene Name | ATG4B autophagy related 4B cysteine peptidase [Homo sapiens (human)] |
| Official Symbol | ATG4B |
| Synonyms | ATG4B; autophagy related 4B cysteine peptidase; APG4B; AUTL1; cysteine protease ATG4B; APG4 autophagy 4 homolog B; ATG4 autophagy related 4 homolog B; AUT-like 1 cysteine endopeptidase; autophagin-1; autophagy-related cysteine endopeptidase 1; autophagy-related protein 4 homolog B; hAPG4B |
| Gene ID | 23192 |
| mRNA Refseq | NM_013325 |
| Protein Refseq | NP_037457 |
| MIM | 611338 |
| UniProt ID | Q9Y4P1 |

 Tel: 1-631-559-9269 1-516-512-3133

 Email: info@creative-biomart.com  Fax: 1-631-938-8127

 45-1 Ramsey Road, Shirley, NY 11967, USA

**SDS-PAGE analysis
of ATG4B**



Lane 1: MW Markers

Lane 2: ATG4B (2 µg)

Lane 3: ATG4B (4 µg)

 Tel: 1-631-559-9269 1-516-512-3133

 Email: info@creative-biomart.com  Fax: 1-631-938-8127

 45-1 Ramsey Road, Shirley, NY 11967, USA