

Recombinant Full Length Human ATG4B Protein, C-Flag-tagged

Cat. No. ATG4B-1974HFL **Lot. No.** (See product label)

SPECIFICATION

Product Overview	Recombinant Full Length Human ATG4B Protein, fused to Flag-tag at C-terminus, was expressed in Mammalian cells.
Species	Human
Source	Mammalian Cells
Description	Autophagy is the process by which endogenous proteins and damaged organelles are destroyed intracellularly. Autophagy is postulated to be essential for cell homeostasis and cell remodeling during differentiation, metamorphosis, non-apoptotic cell death, and aging. Reduced levels of autophagy have been described in some malignant tumors, and a role for autophagy in controlling the unregulated cell growth linked to cancer has been proposed. This gene encodes a member of the autophagin protein family. The encoded protein is also designated as a member of the C-54 family of cysteine proteases. Alternate transcriptional splice variants, encoding different isoforms, have been characterized.
Form	25 mM Tris HCl, pH 7.3, 100 mM glycine, 10% glycerol.
Molecular Mass	44.1 kDa
AA Sequence	MDAATLTYDTLRFAEFEDFPETSEPVWILGRKYSIFTEKDEILSDVASRLWFTYRKNF PAIGGTGPTS DT GWGCMLRCGQMIFAQALVCRHLGRDWRWTQRKRQPDSYFSVL NAFIDRKDSYYSIHQIAQMGVGEKSGSIG QWYGPNTVAQVLKKLAVFDTWSSLAVHIA

 Tel: 1-631-559-9269 1-516-512-3133

 Email: info@creative-biomart.com  Fax: 1-631-938-8127

 45-1 Ramsey Road, Shirley, NY 11967, USA

MDNTVVMEEIRRLCRTSVPCAGATAFPADSDRHCNGFPAGA EVTNRPSPWRPLVL
 LIPLRLGLTDINEAYVETLKHCFMMPQSLGVIGGKPN SAHYFIGYVGEELIYLDPH TT
 QPAVEPTDGC FIPDES FHCQHPPCRMSIAELDPSIAVGFFCKTEDDFNDWCQQVKK
 LSLLGALPMFE LVEQQPSHLACPDVNLNLSLDSSDVERLERFFDSEDEDFEILSL TR
 TRPLEQKLISEEDLAANDILDYKDDDDKV

Purity > 80% as determined by SDS-PAGE and Coomassie blue staining.

Stability Stable for 12 months from the date of receipt of the product under proper storage and handling conditions. Avoid repeated freeze-thaw cycles.

Storage Store at -80 centigrade.

Concentration >50 ug/mL as determined by microplate BCA method.

Preparation Recombinant protein was captured through anti-DDK affinity column followed by conventional chromatography steps.

Protein Families Protease

Protein Pathways Regulation of autophagy

Full Length Full L.

GENE INFORMATION

Gene Name ATG4B autophagy related 4B cysteine peptidase [Homo sapiens (human)]

Official Symbol ATG4B

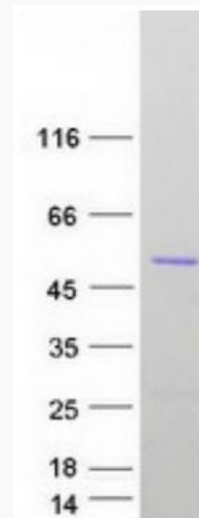
Synonyms APG4B; AUTL1; HsAPG4B

 Tel: 1-631-559-9269 1-516-512-3133

 Email: info@creative-biomart.com  Fax: 1-631-938-8127

 45-1 Ramsey Road, Shirley, NY 11967, USA

Gene ID	23192
mRNA Refseq	NM_013325.5
Protein Refseq	NP_037457.3
MIM	611338
UniProt ID	Q9Y4P1



Coomassie blue staining of purified ATG4B protein.

Tel: 1-631-559-9269 1-516-512-3133

Email: info@creative-biomart.com Fax: 1-631-938-8127

45-1 Ramsey Road, Shirley, NY 11967, USA