

Recombinant Human ATG4B Protein, Myc/DDK-tagged, C13 and N15-labeled

Cat. No. ATG4B-5909H **Lot. No.** (See product label)

SPECIFICATION

Product Overview

ATG4B MS Standard C13 and N15-labeled recombinant protein (NP_037457) with a C-terminal MYC/DDK tag, was expressed in HEK293 cells.

Species

Human

Source

HEK293

Description

Autophagy is the process by which endogenous proteins and damaged organelles are destroyed intracellularly. Autophagy is postulated to be essential for cell homeostasis and cell remodeling during differentiation, metamorphosis, non-apoptotic cell death, and aging. Reduced levels of autophagy have been described in some malignant tumors, and a role for autophagy in controlling the unregulated cell growth linked to cancer has been proposed. This gene encodes a member of the autophagin protein family. The encoded protein is also designated as a member of the C-54 family of cysteine proteases. Alternate transcriptional splice variants, encoding different isoforms, have been characterized.

Molecular Mass

44.3 kDa

AA Sequence

MDAATLTYDTLRFAEFEDFPETSEPVWILGRKYSIFTEKDEILSDVASRLWFTYRKNF
PAIGGTGPTSDTGWGCMLRCGQMIFAQALVCRHLGRDWRWTQRKRQPDSYFVSL
NAFIDRKDSYYSIHQIAQMGVGEKSGIQWYGPNTVAQVLKKLAVFDTWSSLAVHIA
MDNTVVMEEIRRLCRTSVPCAGATAFPADSDRHCNGFPAGAEVTNRPSWRPLVLL

 Tel: 1-631-559-9269 1-516-512-3133

 Email: info@creative-biomart.com  Fax: 1-631-938-8127

 45-1 Ramsey Road, Shirley, NY 11967, USA

IPLRLGLTDINEAYVETLKHCFMMPQSLGVIGGKPNNSAHYFIGYVGEELIYLPHTTQP
 AVEPTDGC FIPDES FHCQHPPCRMSIAELDPSI AVGFFCKTEDDFNDWCQQVKKLSL
 LGGALPMFELVEQQPSHLACPDVNLNLSLDSSDVERLERFFDSEDED FEILSLTRTRP
 LEQKLISEEDLAANDILDYKDDDDKV

Purity > 80% as determined by SDS-PAGE and Coomassie blue staining

Stability Stable for 3 months from receipt of products under proper storage and handling conditions.

Storage Store at -80 centigrade. Avoid repeated freeze-thaw cycles.

Concentration 50 µg/mL as determined by BCA

Storage Buffer 100 mM glycine, 25 mM Tris-HCl, pH 7.3.

GENE INFORMATION

Gene Name [ATG4B autophagy related 4B cysteine peptidase \[Homo sapiens \(human\) \]](#)

Official Symbol [ATG4B](#)

Synonyms ATG4B; ATG4 autophagy related 4 homolog B (*S. cerevisiae*); APG4 autophagy 4 homolog B (*S. cerevisiae*), APG4B; cysteine protease ATG4B; Apg4B; AUTL1; DKFZp586D1822; KIAA0943; hAPG4B; autophagin-1; APG4 autophagy 4 homolog B; AUT-like 1 cysteine endopeptidase; autophagy-related protein 4 homolog B; autophagy-related cysteine endopeptidase 1; APG4B; MGC1353;

Gene ID [23192](#)

mRNA Refseq [NM_013325](#)

 Tel: 1-631-559-9269 1-516-512-3133

 Email: info@creative-biomart.com  Fax: 1-631-938-8127

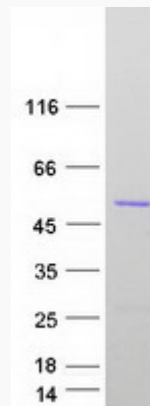
 45-1 Ramsey Road, Shirley, NY 11967, USA

Protein Refseq NP_037457

MIM 611338

UniProt ID Q9Y4P1

SDS-PAGE



 Tel: 1-631-559-9269 1-516-512-3133

 Email: info@creative-biomart.com  Fax: 1-631-938-8127

 45-1 Ramsey Road, Shirley, NY 11967, USA