

Recombinant Human ATG4C Protein, Myc/DDK-tagged, C13 and N15-labeled

Cat. No. ATG4C-2548H Lot. No. (See product label)

SPECIFICATION

Product Overview

ATG4C MS Standard C13 and N15-labeled recombinant protein (NP_116241) with a C-terminal MYC/DDK tag, was expressed in HEK293 cells.

Species

Human

Source

HEK293

Description

Autophagy is the process by which endogenous proteins and damaged organelles are destroyed intracellularly. Autophagy is postulated to be essential for cell homeostasis and cell remodeling during differentiation, metamorphosis, non-apoptotic cell death, and aging. Reduced levels of autophagy have been described in some malignant tumors, and a role for autophagy in controlling the unregulated cell growth linked to cancer has been proposed. This gene encodes a member of the autophagin protein family. The encoded protein is also designated as a member of the C-54 family of cysteine proteases. Alternate transcriptional splice variants, encoding the same protein, have been characterized.

Molecular Mass

52.3 kDa

AA Sequence

MEATGTDEVDKCLKTKFISAWNNMKYSWVLKTKTYFSRNSPVLGKCYHFKYEDED
KTLPAESGCTIEDHVIAGNVEEFRKDFISRIWLTYREEFPQIEGSALTTDCGWGCTLR
TGQMLLAQGLLHFLGRAWTPDALNIENSSESWSHTVKKFTASFEASLSGERE
FKTPTISLKETIGKYSDDHEMRNEVYHRKIISWFGDSPLALFGLHQLIEYGKKSGKKA

 Tel: 1-631-559-9269 1-516-512-3133

 Email: info@creative-biomart.com  Fax: 1-631-938-8127

 45-1 Ramsey Road, Shirley, NY 11967, USA

GDWYGPAVVAHILRKAVEEARHPDLQGITIYVAQDCTVYNSDVIDKQSASMTSDNAD
 DKAVIILVPVRLGGERTNTDYLEFVKGILSLEYCVGIIGGKPKQSYFFAGFQDDSLIYM
 DPHYCQSFVDVSIKDFPLETFHCPSPKKMSFRKMDPSCTIGFYCRNVQDFKRASEEI
 TKMLKFSSKEYPLFTFVNGHSRDYDFTSTTTNEEDLFSEDEKKQLKRFSTEEFVLL
 TRTRPLEQKLISEEDLAANDILDYKDDDDKV

Purity > 80% as determined by SDS-PAGE and Coomassie blue staining

Stability Stable for 3 months from receipt of products under proper storage and handling conditions.

Storage Store at -80 centigrade. Avoid repeated freeze-thaw cycles.

Concentration 50 µg/mL as determined by BCA

Storage Buffer 100 mM glycine, 25 mM Tris-HCl, pH 7.3.

GENE INFORMATION

Gene Name [ATG4C autophagy related 4C cysteine peptidase \[Homo sapiens \(human\) \]](#)

Official Symbol [ATG4C](#)

Synonyms

ATG4C; ATG4 autophagy related 4 homolog C (*S. cerevisiae*); APG4 autophagy 4 homolog C (*S. cerevisiae*), APG4C, AUT (*S. cerevisiae*) like 1, cysteine endopeptidase; AUT like 1, cysteine endopeptidase (*S. cerevisiae*), AUTL1; cysteine protease ATG4C; AUTL3; FLJ14867; autophagin-3; APG4 autophagy 4 homolog C; AUT-like 3 cysteine endopeptidase; AUT-like 1, cysteine endopeptidase; autophagy-related protein 4 homolog C; autophagy-related cysteine endopeptidase 3; APG4C; AUTL1; APG4-C;

 Tel: 1-631-559-9269 1-516-512-3133

 Email: info@creative-biomart.com  Fax: 1-631-938-8127

 45-1 Ramsey Road, Shirley, NY 11967, USA

Gene ID 84938

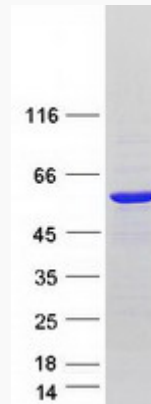
mRNA Refseq NM_032852

Protein Refseq NP_116241

MIM 611339

UniProt ID Q96DT6

SDS-PAGE



 Tel: 1-631-559-9269 1-516-512-3133

 Email: info@creative-biomart.com  Fax: 1-631-938-8127

 45-1 Ramsey Road, Shirley, NY 11967, USA