

# Recombinant Human ATG4C Protein, Myc/DDK-tagged, C13 and N15-labeled

**Cat. No.** ATG4C-3872H    **Lot. No.** (See product label)

## SPECIFICATION

<b>Product Overview</b>	ATG4C MS Standard C13 and N15-labeled recombinant protein (NP_835739) with a C-terminal MYC/DDK tag, was expressed in HEK293 cells.
<b>Species</b>	Human
<b>Source</b>	HEK293
<b>Description</b>	Autophagy is the process by which endogenous proteins and damaged organelles are destroyed intracellularly. Autophagy is postulated to be essential for cell homeostasis and cell remodeling during differentiation, metamorphosis, non-apoptotic cell death, and aging. Reduced levels of autophagy have been described in some malignant tumors, and a role for autophagy in controlling the unregulated cell growth linked to cancer has been proposed. This gene encodes a member of the autophagin protein family. The encoded protein is also designated as a member of the C-54 family of cysteine proteases. Alternate transcriptional splice variants, encoding the same protein, have been characterized.
<b>Molecular Mass</b>	52.3 kDa
<b>AA Sequence</b>	MEATGTDEVDKCLKTKFISAWNNMKYSWVLKTKTYFSRNSPVLGKCYHFKYEDDK KTLPAESGCTIEDHVIAGNVEEFRKDFISRIWLTYREEFPQIEGSALTTDCGWGCTLR TGQMLLAQGLLHFLGRAWTPDALNIENSSESWSHTVKKFTASFEASLSGERE FKTPTISLKETIGKYSDDHEMRNEVYHRKIISWFGDSPLALFGLHQLIEYGKKSGKKA

 Tel: 1-631-559-9269    1-516-512-3133

 Email: [info@creative-biomart.com](mailto:info@creative-biomart.com)     Fax: 1-631-938-8127

 45-1 Ramsey Road, Shirley, NY 11967, USA

GDWYGPAVVAHILRKAVEEARHPDLQGITIYVAQDCTVYNSDVIDKQSASMTSDNAD  
 DKAVIILVPVRLGGERTNTDYLEFVKGILSLEYCVGIIGGKPKQSYFFAGFQDDSLIYM  
 DPHYCQSFVDVSIKDFPLETFHCPSPKKMSFRKMDPSCTIGFYCRNVQDFKRASEEI  
 TKMLKFSSKEYPLFTFVNGHSRDYDFTSTTTNEEDLFSEDEKKQLKRFSTEEFVLL  
 TRTRPLEQKLISEEDLAANDILDYKDDDDKV

**Purity** > 80% as determined by SDS-PAGE and Coomassie blue staining

**Stability** Stable for 3 months from receipt of products under proper storage and handling conditions.

**Storage** Store at -80 centigrade. Avoid repeated freeze-thaw cycles.

**Concentration** 50 µg/mL as determined by BCA

**Storage Buffer** 100 mM glycine, 25 mM Tris-HCl, pH 7.3.

## GENE INFORMATION

**Gene Name** [ATG4C autophagy related 4C cysteine peptidase \[ Homo sapiens \(human\) \]](#)

**Official Symbol** [ATG4C](#)

**Synonyms** ATG4C; ATG4 autophagy related 4 homolog C (*S. cerevisiae*); APG4 autophagy 4 homolog C (*S. cerevisiae*), APG4C, AUT (*S. cerevisiae*) like 1, cysteine endopeptidase; AUT like 1, cysteine endopeptidase (*S. cerevisiae*), AUTL1; cysteine protease ATG4C; AUTL3; FLJ14867; autophagin-3; APG4 autophagy 4 homolog C; AUT-like 3 cysteine endopeptidase; AUT-like 1, cysteine endopeptidase; autophagy-related protein 4 homolog C; autophagy-related cysteine endopeptidase 3; APG4C; AUTL1; APG4-C;

 Tel: 1-631-559-9269 1-516-512-3133

 Email: [info@creative-biomart.com](mailto:info@creative-biomart.com)  Fax: 1-631-938-8127

 45-1 Ramsey Road, Shirley, NY 11967, USA

**Gene ID** 84938

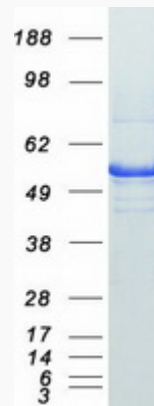
**mRNA Refseq** NM\_178221

**Protein Refseq** NP\_835739

**MIM** 611339

**UniProt ID** Q96DT6

**SDS-PAGE**



 Tel: 1-631-559-9269 1-516-512-3133

 Email: [info@creative-biomart.com](mailto:info@creative-biomart.com)  Fax: 1-631-938-8127

 45-1 Ramsey Road, Shirley, NY 11967, USA