

## Recombinant Human ATG4C protein, GST-tagged

Cat. No. ATG4C-950H Lot. No. (See product label)

### SPECIFICATION

<b>Product Overview</b>	Human ATG4C full-length ORF ( NP_116241.2, 1 a.a. - 458 a.a.) recombinant protein with GST-tag at N-terminal.
<b>Species</b>	Human
<b>Source</b>	Wheat Germ
<b>Description</b>	Autophagy is the process by which endogenous proteins and damaged organelles are destroyed intracellularly. Autophagy is postulated to be essential for cell homeostasis and cell remodeling during differentiation, metamorphosis, non-apoptotic cell death, and aging. Reduced levels of autophagy have been described in some malignant tumors, and a role for autophagy in controlling the unregulated cell growth linked to cancer has been proposed. This gene encodes a member of the autophagin protein family. The encoded protein is also designated as a member of the C-54 family of cysteine proteases. Alternate transcriptional splice variants, encoding the same protein, have been characterized. [provided by RefSeq, Jul 2008]
<b>Molecular Mass</b>	78.9 kDa
<b>AA Sequence</b>	MEATGTDEVKDKLTKFISAWNNMKYSWVLKTKTYFSRNSPVLLLGKCYHFKYEDED KTLPAESGCTIEDHVIAGNVEEFRKDFISRIWLTYREEFPQIEGSALTTDCGWGCTLR TGQMLLAQGLILHFLGRAWTWPDALNIENSSESWSHTVKKFTASFEASLSGERE FKTPTISLKETIGKYSDDHEMRNEVYHRKIISWFGDSPALFGLHQLIEYGKKSGKKA GDWYGPVVAHILRKAVEEARHPDLQGITYVAQDCTVYNSDVIDKQSASMTSDNAD

 Tel: 1-631-559-9269 1-516-512-3133

 Email: [info@creative-biomart.com](mailto:info@creative-biomart.com)  Fax: 1-631-938-8127

 45-1 Ramsey Road, Shirley, NY 11967, USA

DKAVIILVPVRLGGERTNTDYLEFVKGILSLEYCVGIIGGKPKQSYFFAGFQDDSLIYM  
 DPHYCQSFVDVSIKDFPLETFHCPSPKKMSFRKMDPSC TIGFYCRNVQDFKRASEEI  
 TKMLKFSSKEKYPLFTFVNGHSRDYDFTSTTTNEEDLFSEDEKKQLKRFSTEEFVLL

**Applications**

Enzyme-linked Immunoabsorbent Assay; Western Blot (Recombinant protein);  
 Antibody Production; Protein Array

**Notes**

Best use within three months from the date of receipt of this protein.

**Storage**

Store at -80 centigrade. Aliquot to avoid repeated freezing and thawing.

**Storage Buffer**

50 mM Tris-HCl, 10 mM reduced Glutathione, pH=8.0 in the elution buffer.

## GENE INFORMATION

**Gene Name**

ATG4C ATG4 autophagy related 4 homolog C (*S. cerevisiae*) [ *Homo sapiens* ]

**Official Symbol**

ATG4C

**Synonyms**

ATG4C; ATG4 autophagy related 4 homolog C (*S. cerevisiae*); APG4 autophagy 4 homolog C (*S. cerevisiae*) , APG4C, AUT (*S. cerevisiae*) like 1, cysteine endopeptidase; AUT like 1, cysteine endopeptidase (*S. cerevisiae*) , AUTL1; cysteine protease ATG4C; AUTL3; FLJ14867; autophagin-3; APG4 autophagy 4 homolog C; AUT-like 3 cysteine endopeptidase; AUT-like 1, cysteine endopeptidase; autophagy-related protein 4 homolog C; autophagy-related cysteine endopeptidase 3; APG4C; AUTL1; APG4-C;

**Gene ID**

84938

**mRNA Refseq**

NM\_032852

 Tel: 1-631-559-9269 1-516-512-3133

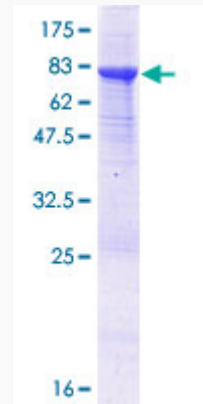
 Email: [info@creative-biomart.com](mailto:info@creative-biomart.com)  Fax: 1-631-938-8127

 45-1 Ramsey Road, Shirley, NY 11967, USA

**Protein Refseq** NP\_116241

**MIM** 611339

**UniProt ID** Q96DT6



12.5% SDS-PAGE Stained with Coomassie Blue.

 Tel: 1-631-559-9269 1-516-512-3133

 Email: [info@creative-biomart.com](mailto:info@creative-biomart.com)  Fax: 1-631-938-8127

 45-1 Ramsey Road, Shirley, NY 11967, USA