

# Recombinant Human ATL1 Protein, Myc/DDK-tagged, C13 and N15-labeled

**Cat. No.** ATL1-1062H    **Lot. No.** (See product label)

## SPECIFICATION

<b>Product Overview</b>	ATL1 MS Standard C13 and N15-labeled recombinant protein (NP_056999) with a C-terminal MYC/DDK tag, was expressed in HEK293 cells.
<b>Species</b>	Human
<b>Source</b>	HEK293
<b>Description</b>	The protein encoded by this gene is a GTPase and a Golgi body transmembrane protein. The encoded protein can form a homotetramer and has been shown to interact with spastin and with mitogen-activated protein kinase kinase kinase 4. This protein may be involved in axonal maintenance as evidenced by the fact that defects in this gene are a cause of spastic paraplegia type 3. Three transcript variants encoding two different isoforms have been found for this gene.
<b>Molecular Mass</b>	63.4 kDa
<b>AA Sequence</b>	MAKNRRDRNSWGGFSEKTYEWSSEEEEPVKKAGPVQVLIVKDEHSFELDETALNRI LLSEAVRDKEVVAVSVAGAFRKGKSFLMDFMLRYMYNQESVDWVGDYNEPLTGF WRGGSERETTGIQIWSEIFLINKPDGKKVAVLLMDTQGTQSTLRDSATVFALST MISSIQVYNLSQNVQEDDLQHLQLCTEYGR LAMEETFLKPFQSLIFLVRDWSFPYEF SYGADGGAKFLEKRLKVSGNQHEELQNVRKHIHSCFTNISCFLPHPLKVPATNPNF DGKLKEIDDEFIKNLKILIPWLLSPESLDIKEINGNKITCRGLVEYFKAYIKIYQGEELPH PKSMLQATAEANNLAAVATAKDTYNKKMEEICGGDKPFLAPNDLQTKHLQLKEESV

 Tel: 1-631-559-9269    1-516-512-3133

 Email: [info@creative-biomart.com](mailto:info@creative-biomart.com)     Fax: 1-631-938-8127

 45-1 Ramsey Road, Shirley, NY 11967, USA

KLFRGVKKMGGEFSRRYLQQLESEIDELYIQYIKHNDSKNIFHAARTPATLFVVIFIT  
 YVIAGVTGFIGLDIIASLCNMIMGLTLITLCTWAYIRYSGEYRELGAVIDQVAAALWDQ  
 GSTNEALYKLYSAAATHRHLYHQAFPTPKSESTEQSEKKKMTRTRPLEQKLISEEDL  
 AANDILDYKDDDDKV

**Purity** > 80% as determined by SDS-PAGE and Coomassie blue staining

**Stability** Stable for 3 months from receipt of products under proper storage and handling conditions.

**Storage** Store at -80 centigrade. Avoid repeated freeze-thaw cycles.

**Concentration** 50 µg/mL as determined by BCA

**Storage Buffer** 100 mM glycine, 25 mM Tris-HCl, pH 7.3.

## GENE INFORMATION

**Gene Name** [ATL1 atlastin GTPase 1 \[ Homo sapiens \(human\) \]](#)

**Official Symbol** [ATL1](#)

**Synonyms** ATL1; atlastin GTPase 1; spastic paraplegia 3A (autosomal dominant), SPG3, SPG3A; atlastin-1; AD FSP; atlastin; FSP1; GBP-3; hGBP3; GTP-binding protein 3; guanylate-binding protein 3; spastic paraplegia 3 protein A; brain-specific GTP-binding protein; guanine nucleotide-binding protein 3; GBP3; SPG3; HSN1D; SPG3A; AD-FSP; atlastin1;

**Gene ID** [51062](#)

**mRNA Refseq** [NM\\_015915](#)

 Tel: 1-631-559-9269 1-516-512-3133

 Email: [info@creative-biomart.com](mailto:info@creative-biomart.com)  Fax: 1-631-938-8127

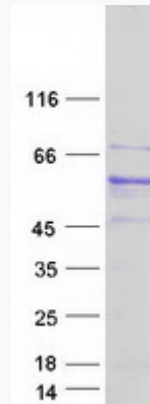
 45-1 Ramsey Road, Shirley, NY 11967, USA

**Protein Refseq** NP\_056999

**MIM** 606439

**UniProt ID** Q8WXF7

**SDS-PAGE**



 Tel: 1-631-559-9269 1-516-512-3133

 Email: [info@creative-biomart.com](mailto:info@creative-biomart.com)  Fax: 1-631-938-8127

 45-1 Ramsey Road, Shirley, NY 11967, USA