

Recombinant Human ATL1 protein, GST-tagged

Cat. No. ATL1-3333H Lot. No. (See product label)

SPECIFICATION

Product Overview	Recombinant Human ATL1 protein(NP_056999.2) (Met 1-Thr 447) was expressed in Insect Cells, fused with the GST tag at the N-terminus.
Species	Human
Source	Insect Cells
ProteinLength	1-447 aa
Form	Lyophilized from sterile 50mM Tris, 100mM NaCl, 0.5mM PMSF, 0.5mM EDTA, 0.5mM GSH, pH 8.0.
Molecular Mass	The recombinant human SPG3A/GST chimera consists of 671 amino acids and has a calculated molecular mass of 77 kDa. It migrates as an approximately 66 kDa band in SDS-PAGE under reducing conditions.
Endotoxin	< 1.0 EU per µg protein as determined by the LAL method.
Purity	> 80 % as determined by SDS-PAGE
Storage	Store it under sterile conditions at -20°C to -80°C upon receiving. Recommend to aliquot the protein into smaller quantities for optimal storage. Avoid repeated freeze-thaw cycles.
Reconstitution	It is recommended that sterile water be added to the vial to prepare a stock solution of

 Tel: 1-631-559-9269 1-516-512-3133

 Email: info@creative-biomart.com  Fax: 1-631-938-8127

 45-1 Ramsey Road, Shirley, NY 11967, USA

0.2 ug/ul. Centrifuge the vial at 4°C before opening to recover the entire contents.

GENE INFORMATION

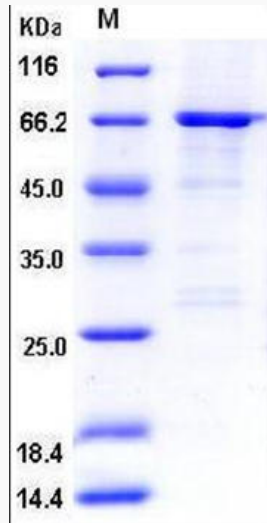
Gene Name	ATL1 atlastin GTPase 1 [Homo sapiens]
Official Symbol	ATL1
Synonyms	ATL1; atlastin GTPase 1; spastic paraplegia 3A (autosomal dominant) , SPG3, SPG3A; atlastin-1; AD FSP; atlastin; FSP1; GBP-3; hGBP3; GTP-binding protein 3; guanylate-binding protein 3; spastic paraplegia 3 protein A; brain-specific GTP-binding protein; guanine nucleotide-binding protein 3; GBP3; SPG3; HSN1D; SPG3A; AD-FSP; atlastin1;
Gene ID	51062
mRNA Refseq	NM_001127713
Protein Refseq	NP_001121185
MIM	606439
UniProt ID	Q8WXF7

 Tel: 1-631-559-9269 1-516-512-3133

 Email: info@creative-biomart.com  Fax: 1-631-938-8127

 45-1 Ramsey Road, Shirley, NY 11967, USA

SDS-PAGE



 Tel: 1-631-559-9269 1-516-512-3133

 Email: info@creative-biomart.com  Fax: 1-631-938-8127

 45-1 Ramsey Road, Shirley, NY 11967, USA