

Recombinant Human ATL2 protein, His-Myc-tagged

Cat. No. ATL2-4618H **Lot. No.** (See product label)

SPECIFICATION

Product Overview	Recombinant Human ATL2 protein(Q8NHH9)(1-476 aa), fused with N-terminal His tag and C-terminal Myc tag, was expressed in E.coli.
Species	Human
Source	E.coli
ProteinLength	1-476 aa
Form	For liquid formulations, the standard storage buffer consists of a Tris or PBS based solution supplemented with 5-50% glycerol. When provided as lyophilized powder, the product undergoes freeze-drying from a Tris- or PBS-based formulation containing 6% trehalose, adjusted to pH 8.0 prior to the lyophilization process.
Molecular Mass	61.8 kDa
AASequence	<p>MAEGDEAARGQQPHQGLWRRRRTSDPSAAVNHVSSTTSLGENYEDDDLVSDEV MKKPCPVQIVLAHEDDHNFELEAEQILLQEHIRDLNIVVSVAGAFRKGKSFLLD FMLRYMYNKDSQSWIGGNNEPLTGFTWRGGCERETTGIQVWNEVFVIDRPNGTKV AVLLMDTQGAFDSQSTIKDCATVFALSTMTSSVQVYNLSQNIQEDDLQHLQLFTEYG RLAMEEIIYQKPFQTLMFLIRDWSYPYEHSYGLEGGKQFLEKRLQVKQNQHEELQNV RKHIHNCFSNLGCFLPHPLKLVATNPSFDGRLKDIDEDFKRELRLNVPLLLAPENLV EKEISGSKVTCRDLVEYFKAYIKIYQGEELPHPKSMLQATAEANNLAAVAGARDTYC KSMEQVCGGDKPYIAPSDLERKHLDLKEVAIKQFRSVKMGGDEFCCRYYQDQLEAE IEETYANFIKHNDGKNIFYAARTPA</p>

 Tel: 1-631-559-9269 1-516-512-3133

 Email: info@creative-biomart.com  Fax: 1-631-938-8127

 45-1 Ramsey Road, Shirley, NY 11967, USA

Purity	Greater than 95% as determined by SDS-PAGE.
Storage	Store at -20°C/-80°C upon receipt, aliquoting is necessary for mutiple use. Avoid repeated freeze-thaw cycles.
Reconstitution	Please reconstitute protein indeionized sterile water to a concentration of 0.1-1.0 mg/mL. Aliquot for long-term storage at -80°C.

GENE INFORMATION

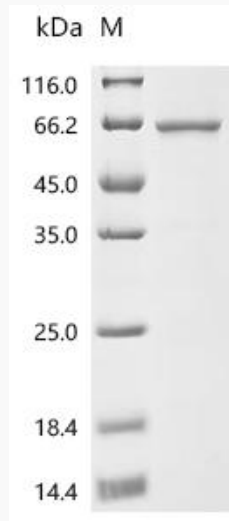
Gene Name	ATL2 atlastin GTPase 2 [Homo sapiens]
Official Symbol	ATL2
Synonyms	ATL2; atlastin GTPase 2; ADP ribosylation factor like 6 interacting protein 2 , ARL6IP2; atlastin-2; aip-2; ARL-6-interacting protein 2; ADP-ribosylation factor-like 6 interacting protein 2; ADP-ribosylation-like factor 6 interacting protein 2; ADP-ribosylation factor-like protein 6-interacting protein 2; ARL3IP2; ARL6IP2; atlastin2; FLJ23293;
Gene ID	64225
mRNA Refseq	NM_001135673
Protein Refseq	NP_001129145
MIM	609368
UniProt ID	Q8NHH9

 Tel: 1-631-559-9269 1-516-512-3133

 Email: info@creative-biomart.com  Fax: 1-631-938-8127

 45-1 Ramsey Road, Shirley, NY 11967, USA

SDS-PAGE



 Tel: 1-631-559-9269 1-516-512-3133

 Email: info@creative-biomart.com  Fax: 1-631-938-8127

 45-1 Ramsey Road, Shirley, NY 11967, USA