

Recombinant Human ATM Protein (Met1-Arg110), N-His-tagged

Cat. No. ATM-0624H Lot. No. (See product label)

SPECIFICATION

Product Overview	Recombinant human ATM (Met1-Arg110) was fused with the N-His tag and was expressed in E. coli.
Species	Human
Source	E.coli
ProteinLength	Met1-Arg110
Form	Lyophilized powder/frozen liquid
Molecular Mass	15.42 kDa
Purity	>90% as determined by SDS-PAGE
Notes	For research use only.
Storage	Use a manual defrost freezer and avoid repeated freeze thaw cycles. Store at 2 to 8 centigrade for one week. Store at -20 to -80 centigrade for twelve months from the date of receipt.
Storage Buffer	0.01M PBS, pH 7.4, 0.02% NLS
Reconstitution	Reconstitute in sterile water for a stock solution.

 Tel: 1-631-559-9269 1-516-512-3133

 Email: info@creative-biomart.com  Fax: 1-631-938-8127

 45-1 Ramsey Road, Shirley, NY 11967, USA

Shipping They are shipped out with dry ice/blue ice unless customers require otherwise.

GENE INFORMATION

Gene Name [ATM ataxia telangiectasia mutated \[Homo sapiens \(human\) \]](#)

Official Symbol [ATM](#)

Synonyms ATM; ataxia telangiectasia mutated; ATA, ataxia telangiectasia mutated (includes complementation groups A, C and D), ATC, ATD, ATDC; serine-protein kinase ATM; TEL1; telomere maintenance 1; homolog (S. cerevisiae); TELO1; AT mutated; A-T mutated; TEL1, telomere maintenance 1, homolog; AT1; ATA; ATC; ATD; ATE; ATDC; MGC74674; DKFZp781A0353;

Gene ID [472](#)

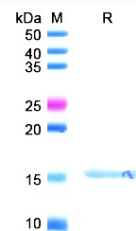
mRNA Refseq [NM_000051](#)

Protein Refseq [NP_000042](#)

MIM [607585](#)

UniProt ID [Q13315](#)

SDS-PAGE



 Tel: 1-631-559-9269 1-516-512-3133

 Email: info@creative-biomart.com  Fax: 1-631-938-8127

 45-1 Ramsey Road, Shirley, NY 11967, USA