

Active Recombinant Human ATM Protein (Full Length), Flag-tagged

Cat. No. ATM-186H Lot. No. (See product label)

SPECIFICATION

Product Overview	Recombinant active human FLAG-tagged ATM full length protein was expressed in a mammalian cell line.
Species	Human
Source	Mammalian Cells
Description	<p>The protein encoded by this gene belongs to the PI3/PI4-kinase family. This protein is an important cell cycle checkpoint kinase that phosphorylates; thus, it functions as a regulator of a wide variety of downstream proteins, including tumor suppressor proteins p53 and BRCA1, checkpoint kinase CHK2, checkpoint proteins RAD17 and RAD9, and DNA repair protein NBS1. This protein and the closely related kinase ATR are thought to be master controllers of cell cycle checkpoint signaling pathways that are required for cell response to DNA damage and for genome stability. Mutations in this gene are associated with ataxia telangiectasia, an autosomal recessive disorder.</p>
Form	Protein in frozen storage buffer.
Molecular Mass	352 kDa
Storage	6 months at -70 centigrade.
Full Length	Full L.

 Tel: 1-631-559-9269 1-516-512-3133

 Email: info@creative-biomart.com  Fax: 1-631-938-8127

 45-1 Ramsey Road, Shirley, NY 11967, USA

GENE INFORMATION

Gene Name ATM ATM serine/threonine kinase [Homo sapiens (human)]

Official Symbol ATM

Synonyms ATM; ATM serine/threonine kinase; AT1; ATA; ATC; ATD; ATE; ATDC; TEL1; TELO1; serine-protein kinase ATM; A-T mutated; AT mutated; TEL1, telomere maintenance 1, homolog; ataxia telangiectasia mutated; serine/threonine kinase ATM; EC 2.7.11.1

Gene ID 472

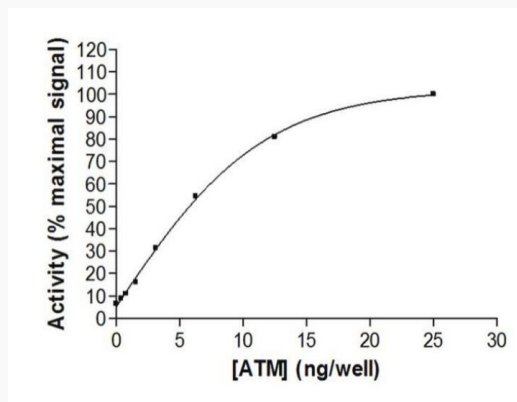
mRNA Refseq NM_000051

Protein Refseq NP_000042

MIM 607585

UniProt ID Q13315

Activity

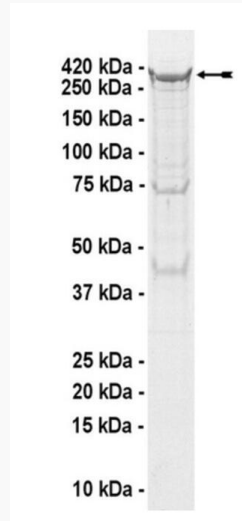


 Tel: 1-631-559-9269 1-516-512-3133

 Email: info@creative-biomart.com  Fax: 1-631-938-8127

 45-1 Ramsey Road, Shirley, NY 11967, USA

SDS-PAGE



 Tel: 1-631-559-9269 1-516-512-3133

 Email: info@creative-biomart.com  Fax: 1-631-938-8127

 45-1 Ramsey Road, Shirley, NY 11967, USA