

Recombinant Human ATM protein, GST-tagged

Cat. No. ATM-953H **Lot. No.** (See product label)

SPECIFICATION

Product Overview	Human ATM full-length ORF (AAH07023.1, 1 a.a. - 138 a.a.) recombinant protein with GST-tag at N-terminal.
Species	Human
Source	Wheat Germ
Description	<p>The protein encoded by this gene belongs to the PI3/PI4-kinase family. This protein is an important cell cycle checkpoint kinase that phosphorylates; thus, it functions as a regulator of a wide variety of downstream proteins, including tumor suppressor proteins p53 and BRCA1, checkpoint kinase CHK2, checkpoint proteins RAD17 and RAD9, and DNA repair protein NBS1. This protein and the closely related kinase ATR are thought to be master controllers of cell cycle checkpoint signaling pathways that are required for cell response to DNA damage and for genome stability. Mutations in this gene are associated with ataxia telangiectasia, an autosomal recessive disorder. [provided by RefSeq, Aug 2010]</p>
Molecular Mass	40.81 kDa
AA Sequence	<p>MTLHEPANSSASQSTDLCDFSGDLPAPNPPHFPSHVVKATFAYISNCHKTKLKSIL EILSKSPDSYQKILLAICEQAAETNNVYKKHRILKIYHLFVSLLLKDIKSGLGAWAFVL RDVIYTLIHYINQRKLTIFSQ</p>
Applications	Enzyme-linked Immunoabsorbent Assay; Western Blot (Recombinant protein); Antibody Production; Protein Array

 Tel: 1-631-559-9269 1-516-512-3133

 Email: info@creative-biomart.com  Fax: 1-631-938-8127

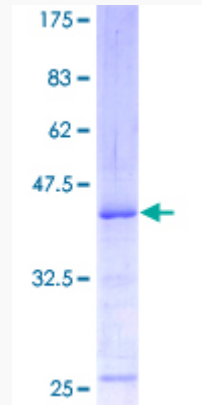
 45-1 Ramsey Road, Shirley, NY 11967, USA

Notes	Best use within three months from the date of receipt of this protein.
Storage	Store at -80 centigrade. Aliquot to avoid repeated freezing and thawing.
Storage Buffer	50 mM Tris-HCl, 10 mM reduced Glutathione, pH=8.0 in the elution buffer.
GENE INFORMATION	
Gene Name	ATM ataxia telangiectasia mutated [Homo sapiens]
Official Symbol	ATM
Synonyms	ATM; ataxia telangiectasia mutated; ATA, ataxia telangiectasia mutated (includes complementation groups A, C and D) , ATC, ATD, ATDC; serine-protein kinase ATM; TEL1; telomere maintenance 1; homolog (S. cerevisiae); TELO1; AT mutated; A-T mutated; TEL1, telomere maintenance 1, homolog; AT1; ATA; ATC; ATD; ATE; ATDC; MGC74674; DKFZp781A0353;
Gene ID	472
mRNA Refseq	NM_000051
Protein Refseq	NP_000042
MIM	607585
UniProt ID	Q13315

 Tel: 1-631-559-9269 1-516-512-3133

 Email: info@creative-biomart.com  Fax: 1-631-938-8127

 45-1 Ramsey Road, Shirley, NY 11967, USA



12.5% SDS-PAGE Stained with Coomassie Blue.

 Tel: 1-631-559-9269 1-516-512-3133

 Email: info@creative-biomart.com  Fax: 1-631-938-8127

 45-1 Ramsey Road, Shirley, NY 11967, USA