

Recombinant Dog ATOX1 protein, His-tagged

Cat. No. ATOX1-4564D Lot. No. (See product label)

SPECIFICATION

Product Overview	Recombinant Dog ATOX1 protein(Q9TT99)(1-68 aa), fused with C-terminal His tag, was expressed in E.coli.
Species	Dog
Source	E.coli
ProteinLength	1-68 aa
Form	For liquid formulations, the standard storage buffer consists of a Tris or PBS based solution supplemented with 5-50% glycerol. When provided as lyophilized powder, the product undergoes freeze-drying from a Tris- or PBS-based formulation containing 6% trehalose, adjusted to pH 8.0 prior to the lyophilization process.
Molecular Mass	14.3 kDa
AASequence	MPKHEFSVDMTCEGCSNAVSRVLNKLGGVEFDIDLPNKKVCINSEHSVDILLETLEKT GKAVSYLGPK
Purity	Greater than 95% as determined by SDS-PAGE.
Storage	Store at -20°C/-80°C upon receipt, aliquoting is necessary for mutiple use. Avoid repeated freeze-thaw cycles.
Reconstitution	Please reconstitute protein indeionized sterile water to a concentration of 0.1-1.0

 Tel: 1-631-559-9269 1-516-512-3133

 Email: info@creative-biomart.com  Fax: 1-631-938-8127

 45-1 Ramsey Road, Shirley, NY 11967, USA

mg/mL. Aliquot for long-term storage at -80°C.

GENE INFORMATION

Gene Name ATOX1 ATX1 antioxidant protein 1 homolog (yeast) [*Canis lupus familiaris*]

Official Symbol ATOX1

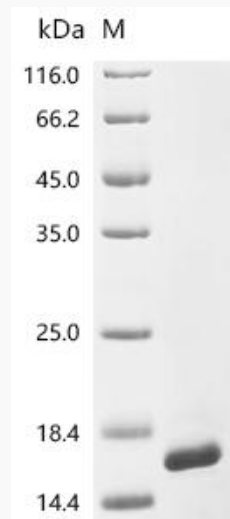
Synonyms ATOX1; ATX1 antioxidant protein 1 homolog (yeast); copper transport protein ATOX1; copper chaperone; metal transport protein ATX1;

Gene ID 403713

mRNA Refseq NM_001003119

Protein Refseq NP_001003119

SDS-PAGE



Tel: 1-631-559-9269 1-516-512-3133

Email: info@creative-biomart.com Fax: 1-631-938-8127

45-1 Ramsey Road, Shirley, NY 11967, USA