

## Recombinant Human ATP12A protein, GST-tagged

Cat. No. ATP12A-961H Lot. No. (See product label)

### SPECIFICATION

<b>Product Overview</b>	Human ATP12A partial ORF ( NP_001667, 174 a.a. - 281 a.a.) recombinant protein with GST-tag at N-terminal.
<b>Species</b>	Human
<b>Source</b>	Wheat Germ
<b>Description</b>	The protein encoded by this gene belongs to the family of P-type cation transport ATPases. This gene encodes a catalytic subunit of the ouabain-sensitive H <sup>+</sup> /K <sup>+</sup> - ATPase that catalyzes the hydrolysis of ATP coupled with the exchange of H(+) and K(+) ions across the plasma membrane. It is also responsible for potassium absorption in various tissues. Two transcript variants encoding different isoforms have been found for this gene. [provided by RefSeq, Jun 2010]
<b>Molecular Mass</b>	37.62 kDa
<b>AA Sequence</b>	SSFNKMIPQQALVIRDSEKKTIPSEQLVVGDIVKGGDQIPADIRVLSSQGCRVDNS SLTGESEPQRSSEFTHENPLETKNICFYSTTCLEASTSPVGTVTGMVIN
<b>Applications</b>	Enzyme-linked Immunoabsorbent Assay; Western Blot (Recombinant protein); Antibody Production; Protein Array
<b>Notes</b>	Best use within three months from the date of receipt of this protein.
<b>Storage</b>	Store at -80 centigrade. Aliquot to avoid repeated freezing and thawing.

 Tel: 1-631-559-9269 1-516-512-3133

 Email: [info@creative-biomart.com](mailto:info@creative-biomart.com)  Fax: 1-631-938-8127

 45-1 Ramsey Road, Shirley, NY 11967, USA

**Storage Buffer** 50 mM Tris-HCl, 10 mM reduced Glutathione, pH=8.0 in the elution buffer.

## GENE INFORMATION

**Gene Name** [ATP12A ATPase, H+/K+ transporting, nongastric, alpha polypeptide \[ Homo sapiens \]](#)

**Official Symbol** [ATP12A](#)

**Synonyms**

ATP12A; ATPase, H+/K+ transporting, nongastric, alpha polypeptide; ATP1AL1, ATPase, Na+/K+ transporting, alpha polypeptide like 1; potassium-transporting ATPase alpha chain 2; ATPase; Na+K+ transporting; alpha 1 polypeptide like; non gastric H(+)/K(+) ATPase alpha subunit; potassium transporting ATPase alpha chain 2; proton pump; sodium/potassium ATPase; alpha polypeptide like; non-gastric H(+)/K(+) ATPase alpha subunit; non-gastric H(+)/K(+) ATPase subunit alpha; ATPase, Na+/K+ transporting, alpha polypeptide-like 1; ATP1AL1;

**Gene ID** [479](#)

**mRNA Refseq** [NM\\_001185085](#)

**Protein Refseq** [NP\\_001172014](#)

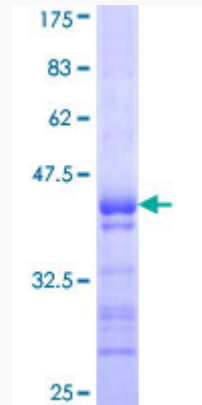
**MIM** [182360](#)

**UniProt ID** [P54707](#)

 Tel: 1-631-559-9269 1-516-512-3133

 Email: [info@creative-biomart.com](mailto:info@creative-biomart.com)  Fax: 1-631-938-8127

 45-1 Ramsey Road, Shirley, NY 11967, USA



12.5% SDS-PAGE Stained with Coomassie Blue.

 Tel: 1-631-559-9269 1-516-512-3133

 Email: [info@creative-biomart.com](mailto:info@creative-biomart.com)  Fax: 1-631-938-8127

 45-1 Ramsey Road, Shirley, NY 11967, USA