

# Recombinant Human ATP13A3 Protein, His&GST-tagged

Cat. No. ATP13A3-264H Lot. No. (See product label)

## SPECIFICATION

<b>Product Overview</b>	Recombinant Human ATP13A3 Protein (Met50-Ser202) with N-His&GST tag was expressed in E. coli.
<b>Species</b>	Human
<b>Source</b>	E.coli
<b>ProteinLength</b>	Met50-Ser202
<b>Description</b>	ATP13A3 is a member of the P-type ATPase family of proteins that transport a variety of cations across membranes. Other P-type ATPases include ATP7B (MIM 606882) and ATP7A (MIM 300011).
<b>Form</b>	Freeze-dried powder
<b>Molecular Mass</b>	Predicted Molecular Mass: 47.7 kDa Accurate Molecular Mass: 48 kDa
<b>Purity</b>	> 90%
<b>Applications</b>	Positive Control; Immunogen; SDS-PAGE; WB.
<b>Stability</b>	The thermal stability is described by the loss rate. The loss rate was determined by accelerated thermal degradation test, that is, incubate the protein at 37 centigrade for 48h, and no obvious degradation and precipitation were observed. The loss rate is

 Tel: 1-631-559-9269 1-516-512-3133

 Email: [info@creative-biomart.com](mailto:info@creative-biomart.com)  Fax: 1-631-938-8127

 45-1 Ramsey Road, Shirley, NY 11967, USA

less than 5% within the expiration date under appropriate storage condition.

**Storage**

Avoid repeated freeze/thaw cycles. Store at 2-8 centigrade for one month. Aliquot and store at -80 centigrade for 12 months.

**Storage Buffer**

20mM Tris, 150mM NaCl, pH8.0, containing 1mM EDTA, 1mM DTT, 0.01% SKL, 5% Trehalose and Proclin300.

**Reconstitution**

Reconstitute in sterile water to a concentration of 0.1-1.0 mg/mL. Do not vortex.

## GENE INFORMATION

**Gene Name**

ATP13A3 ATPase type 13A3 [ Homo sapiens (human) ]

**Official Symbol**

ATP13A3

**Synonyms**

ATP13A3; ATPase type 13A3; probable cation-transporting ATPase 13A3; AFURS1; ATPase family homolog up regulated in senescence cells; ATPase family homolog up-regulated in senescence cells 1; FLJ90613; DKFZp686K16189

**Gene ID**

79572

**mRNA Refseq**

NM\_024524

**Protein Refseq**

NP\_078800

**MIM**

610232

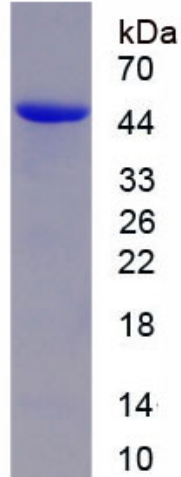
**UniProt ID**

Q9H7F0

 Tel: 1-631-559-9269 1-516-512-3133

 Email: [info@creative-biomart.com](mailto:info@creative-biomart.com)  Fax: 1-631-938-8127

 45-1 Ramsey Road, Shirley, NY 11967, USA



Tel: 1-631-559-9269 1-516-512-3133

Email: [info@creative-biomart.com](mailto:info@creative-biomart.com) Fax: 1-631-938-8127

45-1 Ramsey Road, Shirley, NY 11967, USA