

Recombinant Full Length Human ATP1A1 Protein, C-Flag-tagged

Cat. No. ATP1A1-379HFL **Lot. No.** (See product label)

SPECIFICATION

Product Overview	Recombinant Full Length Human ATP1A1 Protein, fused to Flag-tag at C-terminus, was expressed in Mammalian cells.
Species	Human
Source	Mammalian Cells
Description	The protein encoded by this gene belongs to the family of P-type cation transport ATPases, and to the subfamily of Na ⁺ /K ⁺ -ATPases. Na ⁺ /K ⁺ -ATPase is an integral membrane protein responsible for establishing and maintaining the electrochemical gradients of Na and K ions across the plasma membrane. These gradients are essential for osmoregulation, for sodium-coupled transport of a variety of organic and inorganic molecules, and for electrical excitability of nerve and muscle. This enzyme is composed of two subunits, a large catalytic subunit (alpha) and a smaller glycoprotein subunit (beta). The catalytic subunit of Na ⁺ /K ⁺ -ATPase is encoded by multiple genes. This gene encodes an alpha 1 subunit. Multiple transcript variants encoding different isoforms have been found for this gene.
Form	25 mM Tris HCl, pH 7.3, 100 mM glycine, 10% glycerol.
Molecular Mass	112.7 kDa
AA Sequence	MGKGVGRDKYEPAAVSEQDKKGGKGGKDRDMDLKKKEVSMDDHKLSLDELHRK YGTDLRGLTSARAAE ILARDGPNALTPPPTPEWIKFCRQLFGGFSMLLWIGAILCF

 Tel: 1-631-559-9269 1-516-512-3133

 Email: info@creative-biomart.com  Fax: 1-631-938-8127

 45-1 Ramsey Road, Shirley, NY 11967, USA

LAYSQAATEEEPQNDNLYLGVVLSAVV IITGCFSYYQEAKSSKIMESFKNMVPQQAL
 VIRNGEKMSINAEVVVVDLVEVKGGDRIPADLRIISANG CKVDNSSLTGESEPQTR
 SPDFTNENPLETRNIAFFSTNCVEGTARGIVVYTGDRVTMGRIATLASGLEGG QTPI
 AAIEHFIIITGVAVFLGVVFFILSLILEYTWLEAVIFLIGIIVANVPEGLLATVTVCLTLTA
 KR MARKNCLVKNLEAVETLGGSTSTICSDKTGTLTQNRMTVAHMMWFDNQIHEADTTE
 NQSGVSFDKTSATWLA LSRIAGLCNRAVFQANQENLPILKRAVAGDASESALLKCIE
 LCCGSVKEMRERYAKIVEIPFNSTNKYQL SIHKNPNTSEPQHLLVMKGAPERILDRC
 SSILLHGKEQPLDEELKDAFQDAYLELGGGLGERVLFCHLFL PDEQFPEGFQFDTD
 DVNFPIDNLCFVGLISMIDPPRAAVPDAVGKCRSAGIKVIMVTGDHPITAKAIAKG VGII
 SEGNETVEDIAARLNIPVSQVNPRDAKACVVHGSCLKDMTSEQLDDILKYHTEIVFAR
 TSPQQKLI IVEGCQRQGAIVAVTGDGVNDSPALKKADIGVAMGIAGSDVSKQAADMI
 LLDDNFASIVTGVEEGRLIFD NLKKSIAYTLTSNIFEITPFLIFIIANIPLPLGTVTILCIDLG
 TDMVPAISLAYEQAESDIMKRQPRNPK TDKLVNERLISMAYGQIGMIQALGGFFTYF
 VILAENGLPIHLLGLRVDWDDRWDVVEDSYGQQWTYEQ RKIVEFTCHTAFFVSIV
 VVQWADLVICKTRRNSVFQQGMKNKILIFGLFEETALAAFLSYCPGMGVALRM
 YPLKPTWWFCAPYSLLIFVYDEVKLIIRRRPGGWVEKETYTRTRPLEQKLISEED
 LAANDILDYKDDDDKV

Purity > 80% as determined by SDS-PAGE and Coomassie blue staining.

Stability Stable for 12 months from the date of receipt of the product under proper storage and handling conditions. Avoid repeated freeze-thaw cycles.

Storage Store at -80 centigrade.

Concentration >50 ug/mL as determined by microplate BCA method.

Preparation Recombinant protein was captured through anti-DDK affinity column followed by conventional chromatography steps.

 Tel: 1-631-559-9269 1-516-512-3133

 Email: info@creative-biomart.com  Fax: 1-631-938-8127

 45-1 Ramsey Road, Shirley, NY 11967, USA

Protein Families	Druggable Genome, Transmembrane
Protein Pathways	Cardiac muscle contraction
Full Length	Full L.

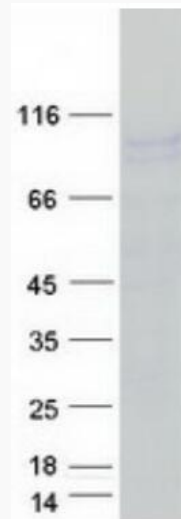
GENE INFORMATION

Gene Name	ATP1A1 ATPase Na ⁺ /K ⁺ transporting subunit alpha 1 [Homo sapiens (human)]
Official Symbol	ATP1A1
Synonyms	CMT2DD; HOMGSMR2
Gene ID	476
mRNA Refseq	NM_000701.8
Protein Refseq	NP_000692.2
MIM	182310
UniProt ID	P05023

 Tel: 1-631-559-9269 1-516-512-3133

 Email: info@creative-biomart.com  Fax: 1-631-938-8127

 45-1 Ramsey Road, Shirley, NY 11967, USA



Coomassie blue staining of purified ATP1A1 protein.

 Tel: 1-631-559-9269 1-516-512-3133

 Email: info@creative-biomart.com  Fax: 1-631-938-8127

 45-1 Ramsey Road, Shirley, NY 11967, USA